

# From Blueprint to Smart City: Pioneering Self-Healing Nano-Engineered Eco-Friendly Concrete and AI-Integrated Structural Health Monitoring for Next-Generation Energy-Efficient Sustainable Architecture

Shan Ul Haq<sup>1\*</sup>, Muhammad Safi Ullah<sup>2</sup>, Muneeb Jamshed<sup>3</sup>, Muhammad Ibrahim Khan<sup>2</sup>, Muneeb Ahmad<sup>2</sup>, Roma Tul Qubra<sup>2</sup>, Muhammad Qasim Ch<sup>1</sup>, Md Zia Ul Haque<sup>4</sup>, Shahid Ahmad<sup>5</sup>

<sup>1</sup>Department of Civil Engineering, HITEC University Taxila, Taxila Cantt, Pakistan

<sup>2</sup>Department of Civil Engineering, Swedish College of Engineering and Technology, Wah Cantt, Pakistan

<sup>3</sup>Department of Civil Engineering, University of Engineering and Technology Peshawar, Peshawar, Pakistan

<sup>4</sup>Department of Computer Science and Engineering, Northern University Bangladesh

<sup>5</sup>School of Materials Science and Engineering, Southeast University, Nanjing, China

DOI: <https://doi.org/10.36347/sjet.2026.v14i06.005>

| Received: 05.04.2026 | Accepted: 12.06.2026 | Published: 22.06.2026

\*Corresponding author: Shan Ul Haq

Department of Civil Engineering, HITEC University Taxila, Taxila Cantt, Pakistan

## Abstract

## Original Research Article

The construction industry is increasingly seeking multifunctional materials capable of enhancing structural durability while minimizing environmental impact. This study presents the development and comprehensive evaluation of a novel self-healing nano-engineered geopolymer concrete incorporating nano-silica (SiO<sub>2</sub>), graphene oxide (GO), titanium dioxide (TiO<sub>2</sub>), biochar, fly ash, ground granulated blast furnace slag (GGBS), and microencapsulated calcium-based healing agents for sustainable smart-city infrastructure applications. Comprehensive physicochemical and microstructural characterization was conducted using X-ray Diffraction (XRD), Fourier Transform Infrared Spectroscopy (FTIR), Field Emission Scanning Electron Microscopy (FESEM), Energy Dispersive X-ray Spectroscopy (EDX), Thermogravimetric Analysis (TGA), Differential Scanning Calorimetry (DSC), Atomic Force Microscopy (AFM), and Brunauer–Emmett–Teller (BET) surface analysis. The characterization results revealed enhanced geopolymeric gel formation, refined pore structure, improved nanoparticle dispersion, and stronger interfacial bonding within the composite matrix. Mechanical performance was evaluated through compressive, split tensile, flexural, fracture toughness, and impact resistance testing, while durability assessment included water permeability, sorptivity, rapid chloride penetration, sulfate resistance, freeze–thaw stability, corrosion resistance, and self-healing behavior. The developed composite demonstrated superior mechanical integrity and enhanced durability characteristics compared with conventional cementitious systems. Self-healing investigations confirmed effective crack-sealing capability, contributing to long-term structural performance and service-life extension. To enable intelligent infrastructure functionality, embedded piezoelectric and fiber-optic sensors were integrated with an Internet of Things (IoT)-based monitoring platform for continuous assessment of strain, vibration, acoustic emissions, and crack propagation. Furthermore, machine-learning models based on Long Short-Term Memory (LSTM), Random Forest (RF), and Convolutional Neural Networks (CNN) were employed for predictive damage detection and structural health assessment. The integrated framework demonstrates the potential of combining self-healing nanomaterials, advanced sensing technologies, and artificial intelligence to develop resilient, low-carbon, energy-efficient, and sustainable infrastructure systems for next-generation smart cities.

**Keywords:** Self-Healing Concrete, Nano-Engineered Geopolymer, Structural Health Monitoring, Artificial Intelligence, Smart Infrastructure, Sustainable Construction.

Copyright © 2026 The Author(s): This is an open-access article distributed under the terms of the Creative Commons Attribution 4.0 International License (CC BY-NC 4.0) which permits unrestricted use, distribution, and reproduction in any medium for non-commercial use provided the original author and source are credited.

## 1. INTRODUCTION

The future of sustainable urban development depends upon the successful integration of environmentally responsible construction materials, advanced durability enhancement strategies, and intelligent infrastructure management systems. While

significant progress has been achieved independently in the fields of geopolymer technology, self-healing materials, nanotechnology, structural health monitoring, and artificial intelligence, their collective implementation within a unified infrastructure framework remains limited. Consequently, there is an increasing need for multidisciplinary solutions capable

**Citation:** Shan Ul Haq, Muhammad Safi Ullah, Muneeb Jamshed, Muhammad Ibrahim Khan, Muneeb Ahmad, Roma Tul Qubra, Muhammad Qasim Ch, Md Zia Ul Haque, Shahid Ahmad. From Blueprint to Smart City: Pioneering Self-Healing Nano-Engineered Eco-Friendly Concrete and AI-Integrated Structural Health Monitoring for Next-Generation Energy-Efficient Sustainable Architecture. Sch J Eng Tech, 2026 Jun 14(6): 325-354.

of simultaneously addressing carbon reduction, structural resilience, maintenance optimization, and real-time performance monitoring [1, 2]. In response to these challenges, the present study proposes an integrated approach that combines self-healing nano-engineered geopolymer concrete with embedded sensing technologies, Internet of Things (IoT)-enabled monitoring, and machine-learning-driven predictive analytics. This section introduces the global sustainability challenges facing contemporary infrastructure, reviews the evolution of self-healing geopolymer systems, and discusses the emergence of intelligent construction paradigms that are shaping the next generation of smart-city development [3, 4].

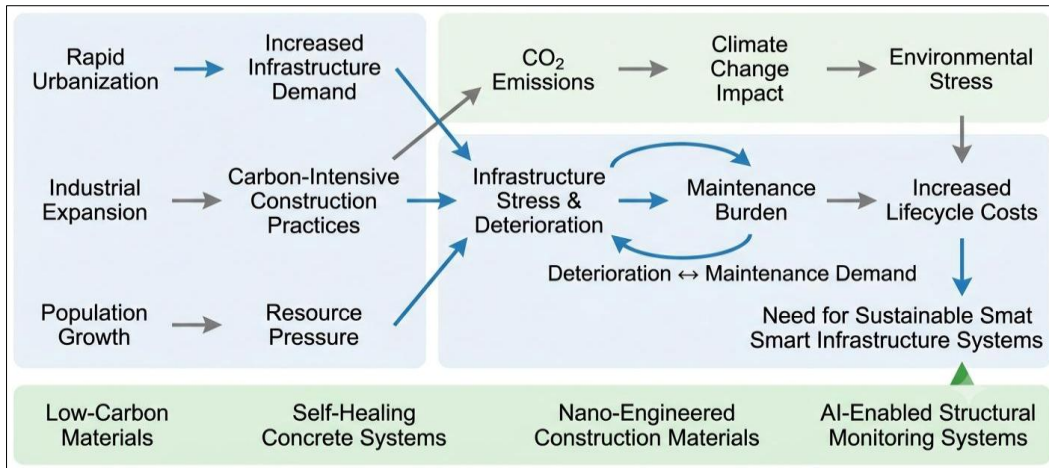
### 1.1 Global Infrastructure Crisis and Sustainability Challenges

The accelerating pace of urbanization, industrial expansion, and population growth has placed unprecedented pressure on global infrastructure systems. Modern cities are expected to accommodate increasing demands for transportation, housing, energy distribution, water management, and public services while simultaneously addressing environmental sustainability objectives. However, the majority of existing infrastructure networks were designed using conventional construction materials and engineering approaches that primarily emphasized short-term structural performance rather than long-term resilience, sustainability, and adaptability. As a result, many infrastructure assets are experiencing premature deterioration, escalating maintenance requirements, and reduced operational efficiency, creating significant economic and environmental burdens for governments and society. Among the various construction materials employed worldwide, concrete remains the most extensively utilized due to its versatility, affordability, and structural reliability. Nevertheless, conventional concrete production is heavily dependent on Ordinary Portland Cement (OPC), the manufacturing of which is associated with substantial carbon emissions and energy consumption. The cement industry is widely recognized as one of the largest industrial contributors to anthropogenic carbon dioxide emissions, accounting for approximately eight percent of global CO<sub>2</sub> emissions. The calcination of limestone during clinker production, combined with the combustion of fossil fuels required for high-temperature processing, generates considerable greenhouse gas emissions that contribute directly to climate change and environmental degradation [5-8].

The environmental implications of cement production extend beyond carbon emissions alone. Extensive extraction of natural resources, depletion of raw materials, and increasing energy demands have intensified concerns regarding the long-term sustainability of traditional construction practices. As

global commitments toward carbon neutrality and sustainable development continue to strengthen, there is growing pressure on the construction industry to transition toward low-carbon and environmentally responsible material systems capable of reducing ecological impacts while maintaining structural performance standards [9-13].

In parallel with environmental concerns, infrastructure deterioration has emerged as a major challenge affecting both developed and developing economies. Civil engineering structures are continuously exposed to mechanical loading, environmental fluctuations, chemical attack, and operational stresses throughout their service life. These factors often initiate microcracks within the concrete matrix, which subsequently evolve into larger defects capable of accelerating moisture ingress, chloride penetration, reinforcement corrosion, and material degradation. Over time, such deterioration mechanisms compromise structural integrity, reduce service life, and increase the likelihood of costly repair interventions. Urban infrastructure systems face additional challenges associated with climate change-induced extreme weather events. Increased temperatures, flooding, freeze-thaw cycles, and aggressive environmental exposure conditions further accelerate deterioration processes, particularly in aging structures. Consequently, infrastructure managers are increasingly confronted with the difficult task of balancing maintenance expenditures with the need to ensure structural safety, reliability, and operational continuity. The economic consequences of infrastructure degradation are equally significant. Traditional maintenance strategies are predominantly reactive, relying upon scheduled inspections and post-damage repair operations. Such approaches frequently identify problems only after substantial deterioration has already occurred, resulting in higher rehabilitation costs and service disruptions. Lifecycle assessments consistently indicate that maintenance and repair expenditures often exceed initial construction costs over the operational lifespan of infrastructure assets. Therefore, reducing maintenance frequency and extending service life have become critical objectives for future construction technologies. These challenges collectively highlight the necessity for next-generation construction materials capable of delivering enhanced durability, environmental sustainability, and long-term performance. Future infrastructure systems must move beyond the conventional paradigm of passive load-bearing functionality and evolve toward intelligent, adaptive, and resilient engineering solutions. The integration of sustainable materials, self-healing technologies, nanotechnology, and digital monitoring platforms represents a promising pathway for achieving this transformation [14-18].



**Figure 1: Global Infrastructure Sustainability Challenge Framework**

The figure demonstrates that infrastructure sustainability cannot be achieved solely through material replacement or digitalization alone. Instead, long-term resilience requires simultaneous optimization of environmental performance, structural durability, maintenance efficiency, and operational intelligence. This integrated perspective forms the foundation for developing advanced smart-city construction systems [19-27].

Table 1 summarizes the principal challenges confronting contemporary infrastructure systems and identifies the technological requirements necessary to address them. The comparison highlights how environmental, structural, and economic concerns collectively necessitate multidisciplinary innovation involving sustainable materials, self-healing mechanisms, and intelligent monitoring technologies.

**Table 1: Major Challenges and Technological Requirements for Sustainable Infrastructure Development**

Infrastructure Challenge	Primary Cause	Engineering Impact	Required Solution
High Carbon Emissions	OPC Production	Environmental burden	Low-carbon binders
Crack Formation	Mechanical loading	Durability loss	Self-healing systems
Corrosion	Chloride ingress	Structural degradation	Dense nano-engineered matrices
Maintenance Costs	Reactive repair strategies	Lifecycle expense increase	Predictive monitoring
Urbanization Pressure	Population growth	Resource demand escalation	Smart sustainable materials
Climate Change	Extreme environmental conditions	Accelerated deterioration	Resilient infrastructure systems

### 1.2 Evolution of Geopolymer and Self-Healing Concrete Systems

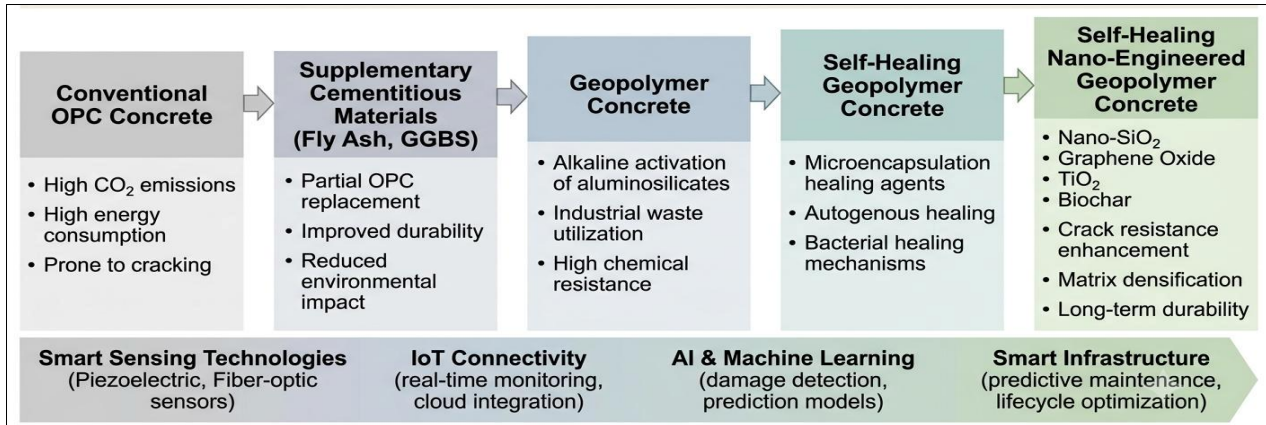
The search for sustainable alternatives to conventional cement-based construction materials has led to significant advances in geopolymer technology and self-healing concrete systems. Over the last two decades, researchers have increasingly recognized that merely improving the compressive strength of concrete is insufficient for addressing the broader challenges of sustainability, durability, and infrastructure resilience. Instead, modern material design strategies focus on creating multifunctional composites capable of minimizing environmental impacts while simultaneously enhancing long-term structural performance. Within this context, geopolymer concrete and self-healing technologies have emerged as two of the most promising innovations in contemporary construction materials research. Conventional Ordinary Portland Cement has long served as the dominant binding material in concrete production due to its established manufacturing

infrastructure and predictable engineering behavior. Despite these advantages, OPC production remains associated with high energy consumption, substantial carbon dioxide emissions, and intensive natural resource utilization. Furthermore, conventional cementitious systems remain vulnerable to cracking, chemical attack, and long-term durability degradation. These limitations have motivated the development of alternative binder systems capable of reducing environmental impacts while maintaining or improving engineering performance [28-34].

Geopolymer technology offers a fundamentally different approach to binder formation. Rather than relying on clinker-based hydration reactions, geopolymer materials are synthesized through the alkaline activation of aluminosilicate-rich precursor materials. Industrial by-products such as fly ash and ground granulated blast furnace slag (GGBS) have attracted particular attention because they contain

significant quantities of reactive silica and alumina that participate in geopolymerization reactions. Through appropriate activation, these materials form three-dimensional aluminosilicate networks that exhibit excellent mechanical strength, chemical resistance, and thermal stability. The utilization of fly ash and GGBS provides additional environmental benefits beyond carbon reduction. These materials are generated in large quantities as industrial waste streams and often require

extensive disposal management. Incorporating such by-products into construction materials supports circular economy principles by transforming industrial residues into valuable engineering resources. Consequently, geopolymer technology simultaneously addresses waste management challenges and sustainability objectives while reducing dependence on virgin raw materials [35, 36].



**Figure 2: Evolution from OPC Concrete to Self-Healing Nano-Engineered Geopolymer Concrete**

The figure demonstrates that future construction materials must simultaneously address environmental performance, durability enhancement, crack mitigation, and lifecycle optimization. The integration of geopolymer technology, industrial by-product utilization, self-healing mechanisms, and nanomaterial reinforcement establishes a comprehensive pathway toward sustainable and intelligent infrastructure development [37-39].

### 1.3 Smart Infrastructure and AI-Enabled Construction Paradigm

While advances in material engineering have significantly improved the durability and sustainability of modern construction systems, future smart-city infrastructure requires capabilities that extend beyond passive structural performance. Contemporary urban environments demand infrastructure assets capable of continuously assessing their condition, detecting anomalies, predicting potential failures, and supporting data-driven maintenance decisions. These requirements have accelerated the emergence of Structural Health Monitoring (SHM), Internet of Things (IoT) technologies, and Artificial Intelligence (AI)-based predictive analytics as transformative components of next-generation civil engineering systems. Traditional infrastructure inspection methodologies primarily rely on periodic visual assessments conducted by human inspectors. Although such approaches remain widely utilized, they often suffer from limitations related to subjectivity, accessibility, labor requirements, and delayed damage detection. Critical defects may remain undetected for extended periods, allowing deterioration processes to progress before corrective action is

implemented. Consequently, researchers have increasingly focused on developing automated monitoring systems capable of providing continuous and objective assessments of structural condition. Structural Health Monitoring has evolved significantly over recent decades. Early SHM systems relied upon simple instrumentation designed to measure localized structural responses. Advances in sensing technology have subsequently enabled the deployment of sophisticated monitoring networks capable of capturing real-time information regarding strain, displacement, vibration, temperature, acoustic emissions, and crack propagation. Among the most promising sensing technologies are piezoelectric sensors and fiber-optic sensors, both of which offer high sensitivity, durability, and compatibility with concrete infrastructure applications [40-48].

The present research addresses this gap by proposing an integrated paradigm that combines self-healing nano-engineered geopolymer concrete with embedded piezoelectric and fiber-optic sensing technologies, IoT-enabled monitoring platforms, and advanced machine-learning algorithms. Unlike conventional approaches that treat materials and monitoring systems as separate entities, the proposed framework establishes a synergistic relationship between material functionality and digital intelligence. Such integration enables infrastructure assets not only to resist and repair damage but also to continuously evaluate their own condition and support predictive maintenance strategies. This convergence of sustainable materials, autonomous healing mechanisms, smart sensing technologies, and artificial intelligence represents a

fundamental shift in infrastructure engineering. Future structures are expected to function as intelligent systems capable of self-monitoring, self-diagnosis, and enhanced lifecycle optimization. Consequently, the proposed framework provides a foundation for the development of resilient, low-carbon, energy-efficient, and data-driven smart-city infrastructure capable of meeting the complex demands of future urban environments.

## 2. LITERATURE REVIEW

### 2.1 Nano-Engineered Cementitious and Geopolymer Materials

The growing demand for sustainable and durable construction materials has accelerated research into nano-engineered cementitious and geopolymer composites. Conventional Ordinary Portland Cement (OPC)-based materials are associated with high carbon emissions, energy-intensive production processes, and susceptibility to long-term deterioration. Consequently, geopolymer binders synthesized from industrial by-products such as fly ash and Ground Granulated Blast Furnace Slag (GGBS) have emerged as promising alternatives owing to their lower environmental footprint and superior chemical resistance. Recent developments have further enhanced geopolymer technology through the incorporation of nanomaterials capable of modifying the microstructure at the molecular level. Nano-silica ( $\text{SiO}_2$ ) is among the most extensively investigated nanomaterials due to its high pozzolanic reactivity and ability to accelerate geopolymerization reactions. The

addition of nano-silica promotes the formation of dense aluminosilicate gel networks, reduces capillary porosity, and improves interfacial transition zones. These effects collectively contribute to higher compressive strength, reduced permeability, and enhanced durability. Similarly, graphene oxide (GO) has attracted significant attention because of its exceptional mechanical properties, large specific surface area, and oxygen-containing functional groups. GO acts as a nucleation platform for geopolymeric gel growth while simultaneously bridging nanoscale cracks, resulting in improved tensile strength, fracture toughness, and structural integrity [49].

Titanium dioxide ( $\text{TiO}_2$ ) nanoparticles have also demonstrated considerable potential in multifunctional construction materials. Beyond mechanical enhancement,  $\text{TiO}_2$  exhibits photocatalytic properties capable of degrading environmental pollutants and contributing to self-cleaning infrastructure surfaces. Moreover,  $\text{TiO}_2$  particles improve matrix densification by filling microvoids and refining pore structures. The synergistic combination of nano-silica, graphene oxide, and  $\text{TiO}_2$  has been reported to generate significant improvements in both mechanical and durability performance through complementary strengthening mechanisms. Despite these advances, the simultaneous integration of multiple nanomaterials within self-healing geopolymer systems remains insufficiently explored, particularly in conjunction with intelligent monitoring technologies [50].

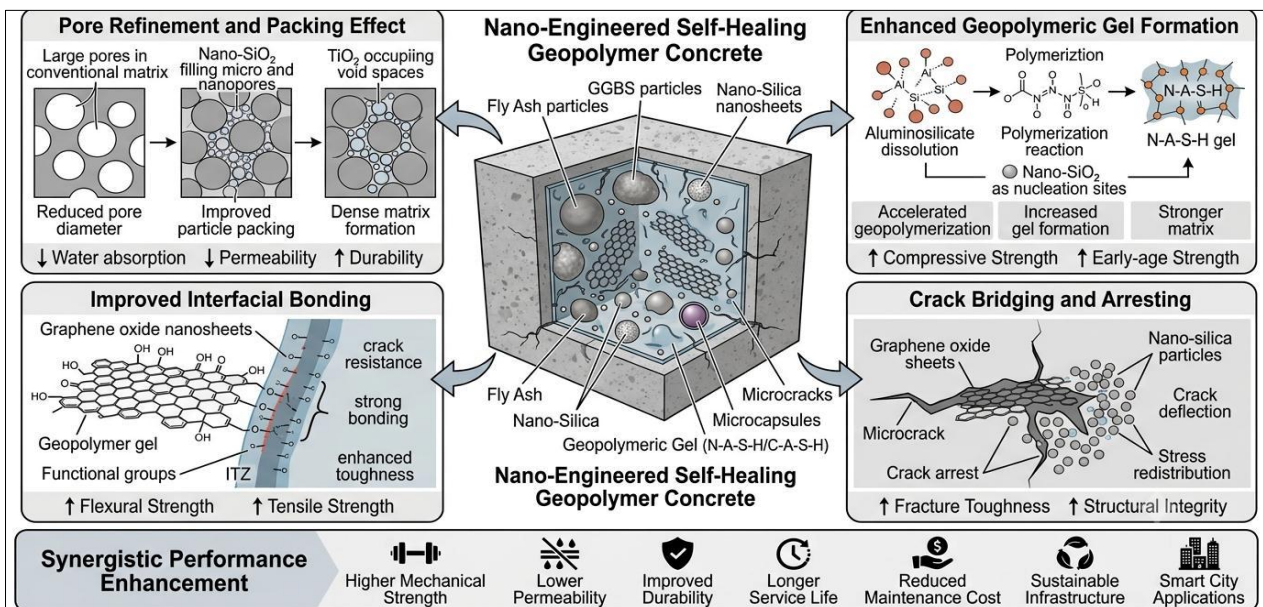


Figure 3: Schematic Representation of Nanomaterial Reinforcement Mechanisms in Geopolymer Concrete

This Figure illustrates the role of nano-silica, graphene oxide, and  $\text{TiO}_2$  nanoparticles in refining pore structure, enhancing geopolymeric gel formation, improving interfacial bonding, and bridging microcracks. The synergistic interaction among these nanomaterials contributes to improved mechanical

performance, reduced permeability, and enhanced long-term durability of geopolymer composites.

### 2.2 Self-Healing Concrete Technologies

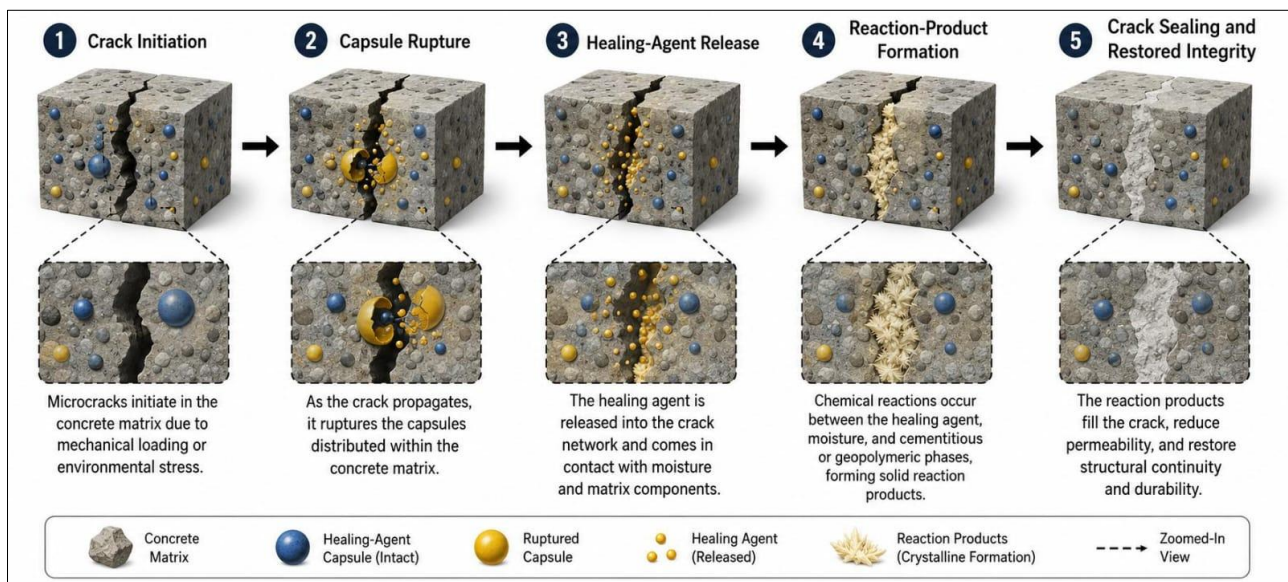
Structural deterioration caused by cracking remains a major challenge affecting the durability and

service life of concrete infrastructure. To address this issue, self-healing concrete technologies have been developed to enable autonomous crack repair without extensive maintenance interventions. These systems aim to restore mechanical integrity, reduce ingress of aggressive agents, and extend structural lifespan.

Among various approaches, capsule-based self-healing systems have received considerable attention. In these systems, healing agents are encapsulated within polymeric or inorganic shells and distributed throughout the concrete matrix. When cracks propagate, the capsules rupture and release healing compounds into the damaged region. The released material reacts with moisture or surrounding constituents to generate solid products capable of sealing cracks and restoring continuity. Capsule-based technologies offer targeted healing capability and can be tailored to specific environmental conditions [51-54].

Crystalline healing agents represent another important category of self-healing materials. These

compounds react with water and unhydrated particles to form insoluble crystalline products that block pores and cracks. Such systems have demonstrated effectiveness in improving impermeability and reducing water penetration. However, healing efficiency often decreases with increasing crack width, limiting applicability under severe damage conditions. Bio-based self-healing technologies utilize microorganisms capable of precipitating calcium carbonate within crack networks. Bacterial healing systems have shown remarkable crack-sealing efficiency and environmental compatibility. Nevertheless, concerns regarding bacterial survival, nutrient availability, and long-term stability continue to hinder large-scale implementation. Although substantial progress has been achieved, current self-healing technologies often face limitations related to healing repeatability, environmental adaptability, and integration with smart monitoring systems. Consequently, there remains a need for multifunctional materials capable of combining autonomous repair with real-time structural assessment.



**Figure 4: Conceptual Framework of Capsule-Based Self-Healing Mechanism**

This Figure presents the sequence of crack initiation, capsule rupture, healing-agent release, and subsequent crack sealing through reaction-product formation. The process highlights how autonomous repair mechanisms reduce permeability, prevent deterioration, and restore structural continuity, thereby enhancing the durability and service life of sustainable infrastructure systems [55].

### 2.3 Durability Performance in Harsh Environments

The long-term performance of concrete structures is strongly influenced by exposure to aggressive environmental conditions. Chloride penetration, sulfate attack, freeze-thaw cycles, and reinforcement corrosion represent major degradation mechanisms responsible for structural deterioration

worldwide. Therefore, durability enhancement has become a primary objective in the development of advanced cementitious and geopolymer materials. Chloride-induced corrosion is particularly critical in marine and coastal environments. Chloride ions penetrate concrete through pores and microcracks, eventually reaching reinforcing steel and disrupting the passive oxide layer. The resulting corrosion products expand and generate internal stresses that accelerate cracking and spalling.

Nano-engineered geopolymer systems have demonstrated superior resistance to chloride ingress owing to their refined pore networks and reduced permeability. Sulfate attack constitutes another significant durability challenge. Sulfate ions react with

hydration products and geopolymeric phases, leading to volumetric expansion, cracking, and loss of mechanical strength. Studies indicate that dense geopolymer matrices containing nano-scale additives exhibit improved chemical stability and enhanced resistance to sulfate-induced deterioration.

Freeze-thaw damage is prevalent in cold climates where cyclic freezing and thawing generate hydraulic pressures within pore structures. Repeated cycles can induce microcracking, surface scaling, and progressive strength loss. Nanomaterial incorporation has been shown to improve resistance by reducing pore

connectivity and limiting water absorption. Corrosion of reinforcing steel remains the costliest durability issue in infrastructure management. Recent investigations demonstrate that geopolymer systems incorporating supplementary nano-additives significantly delay corrosion initiation by restricting the transport of aggressive species. However, durability studies often focus on isolated degradation mechanisms, whereas real-world structures experience multiple environmental stressors simultaneously. This gap highlights the necessity for integrated durability-oriented material design approaches [56-60].

**Table 2: Influence of Advanced Technologies on Sustainable Concrete Performance**

Technology	Primary Function	Major Benefits	Key Limitation
Nano-Silica	Matrix densification	Higher strength and lower permeability	Agglomeration risk
Graphene Oxide	Crack bridging and reinforcement	Improved toughness and tensile performance	Dispersion challenges
TiO <sub>2</sub> Nanoparticles	Pore refinement and photocatalysis	Self-cleaning and durability enhancement	Cost considerations
Microcapsule Healing Agents	Autonomous crack repair	Extended service life	Limited repeated healing
Bacterial Healing Systems	Calcium carbonate precipitation	Eco-friendly crack sealing	Biological stability issues
IoT-Based SHM	Continuous monitoring	Real-time infrastructure assessment	Data management complexity

This table summarizes the contributions of nanotechnology, self-healing mechanisms, and digital monitoring systems to sustainable infrastructure development. While each technology offers distinct advantages, their independent implementation often limits overall effectiveness. Integrating these approaches within a unified framework may significantly enhance durability, resilience, and lifecycle performance.

#### 2.4 AI, IoT, and Structural Health Monitoring Systems

The emergence of smart-city infrastructure has transformed conventional maintenance practices by enabling continuous monitoring and predictive decision-making. Structural Health Monitoring (SHM) systems utilize embedded sensors, communication networks, and intelligent algorithms to evaluate structural conditions in real time and detect damage before catastrophic failure occurs. Fiber-optic sensors have gained widespread adoption due to their high sensitivity, immunity to electromagnetic interference, and ability to perform distributed measurements over long distances. These sensors are capable of monitoring strain, temperature, deformation, and crack development within structural components. Piezoelectric sensors represent another important sensing technology capable of generating electrical signals in response to mechanical stress. Their ability to detect vibrations, acoustic emissions, and dynamic structural responses makes them highly suitable for damage identification applications. The integration of the Internet of Things (IoT) has significantly expanded

SHM capabilities by facilitating continuous data transmission, cloud-based storage, and remote infrastructure management. Real-time monitoring frameworks enable engineers to track structural behavior throughout the service life of critical assets, thereby reducing maintenance costs and improving operational reliability [61-67].

Recent advances in Artificial Intelligence (AI) have further enhanced SHM performance. Long Short-Term Memory (LSTM) networks are particularly effective for time-series analysis and future condition prediction. Convolutional Neural Networks (CNNs) have demonstrated exceptional capability in automated crack detection and image-based damage assessment. Random Forest (RF) algorithms provide robust classification and regression performance while maintaining computational efficiency. Despite these developments, most existing studies investigate sensing systems, self-healing materials, and AI algorithms independently. The absence of an integrated framework capable of simultaneously combining self-healing geopolymer materials, nano-engineering strategies, IoT-enabled sensing, and AI-driven predictive analytics represents a significant research gap. Addressing this gap is essential for realizing autonomous, resilient, and energy-efficient infrastructure systems that can support the evolving demands of future smart cities.

### 3. RESEARCH METHODOLOGY

The present study was designed to develop a multifunctional self-healing nano-engineered geopolymer concrete capable of simultaneously improving structural performance, durability, autonomous crack repair, and intelligent infrastructure monitoring. The adopted methodology integrates sustainable geopolymer technology, nanomaterial engineering, self-healing mechanisms, advanced material characterization, and Artificial Intelligence (AI)-assisted Structural Health Monitoring (SHM). The experimental framework was structured to evaluate the synergistic interaction among eco-friendly binder systems, nano-reinforcements, embedded sensing technologies, and predictive analytical models. The overall methodology was established to provide a comprehensive assessment of material behavior from the nanoscale to full-scale infrastructure intelligence applications.

#### 3.1 Materials Selection and Characterization Plan

The selection of constituent materials was based on sustainability, mechanical performance enhancement, durability improvement, and smart functionality requirements. Fly ash and Ground Granulated Blast Furnace Slag (GGBS) were selected as the primary aluminosilicate precursors due to their high reactivity and ability to significantly reduce the environmental impact associated with Ordinary Portland Cement production. The utilization of industrial by-products additionally supports circular economy principles and waste valorization strategies.

Nano-silica was incorporated to accelerate geopolymerization reactions and promote the formation

of dense aluminosilicate gel structures. Graphene oxide (GO) was introduced because of its exceptional mechanical strength, high aspect ratio, and crack-bridging capability. Titanium dioxide (TiO<sub>2</sub>) nanoparticles were utilized to enhance matrix densification while simultaneously providing photocatalytic and self-cleaning functionalities. Biochar was incorporated as a sustainable carbon-rich additive capable of improving internal curing, moisture retention, and carbon sequestration potential. To enable autonomous crack repair, microencapsulated calcium-based healing agents were embedded within the geopolymer matrix. These capsules were designed to rupture upon crack formation, releasing healing compounds capable of generating solid reaction products that restore structural continuity and reduce permeability.

Prior to mix preparation, all raw materials underwent comprehensive physicochemical characterization. Chemical composition analysis was planned using X-ray Fluorescence (XRF) to determine major oxide concentrations including SiO<sub>2</sub>, Al<sub>2</sub>O<sub>3</sub>, CaO, Fe<sub>2</sub>O<sub>3</sub>, and MgO. Physical characterization involved particle size distribution analysis, specific gravity determination, surface area measurements, and morphological assessment [68-70].

Table 3 summarizes the primary materials incorporated within the developed geopolymer system. Each constituent was selected to provide a specific functionality ranging from sustainable binder formation and nanostructural enhancement to self-healing capability and long-term durability improvement.

**Table 3: Materials Utilized in the Development of Self-Healing Nano-Engineered Geopolymer Concrete**

Material	Function in Composite System	Expected Contribution
Fly Ash	Aluminosilicate precursor	Sustainable geopolymer matrix formation
GGBS	Calcium-rich precursor	Early strength enhancement
Nano-Silica	Nanostructure modifier	Pore refinement and matrix densification
Graphene Oxide	Nano-reinforcement	Crack bridging and toughness improvement
TiO <sub>2</sub> Nanoparticles	Functional additive	Durability and photocatalytic activity
Biochar	Sustainable additive	Internal curing and carbon sequestration
Microcapsules	Self-healing agent	Autonomous crack repair
NaOH/Na <sub>2</sub> SiO <sub>3</sub>	Alkaline activator	Geopolymerization process

This table summarizes the primary materials incorporated within the developed geopolymer system. Each constituent was selected to provide a specific

functionality ranging from sustainable binder formation and nanostructural enhancement to self-healing capability and long-term durability improvement.

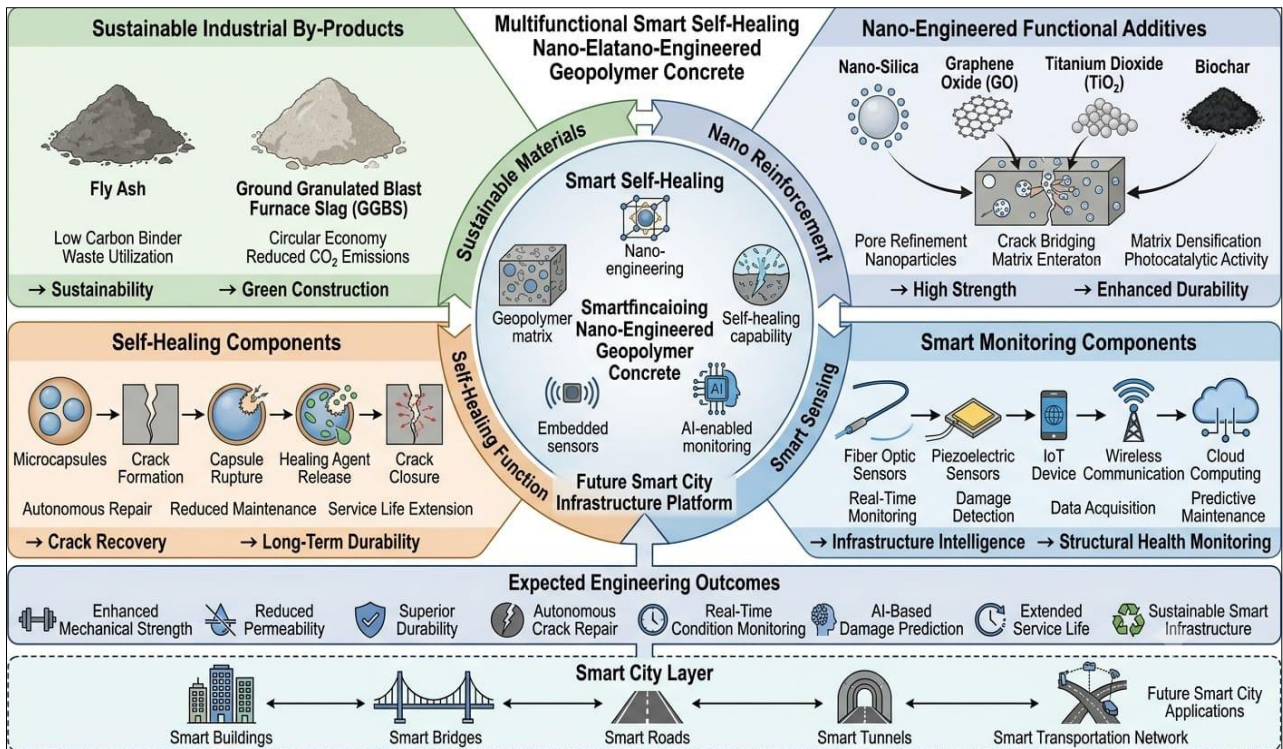


Figure 5: Material Selection Strategy for Multifunctional Smart Geopolymer Concrete

This figure illustrates the integration of industrial by-products, nanomaterials, self-healing agents, and sensing technologies within a unified geopolymer framework. The material selection strategy

was designed to maximize sustainability, durability, crack-repair capability, and intelligent monitoring performance for future smart-city infrastructure applications [71-75].

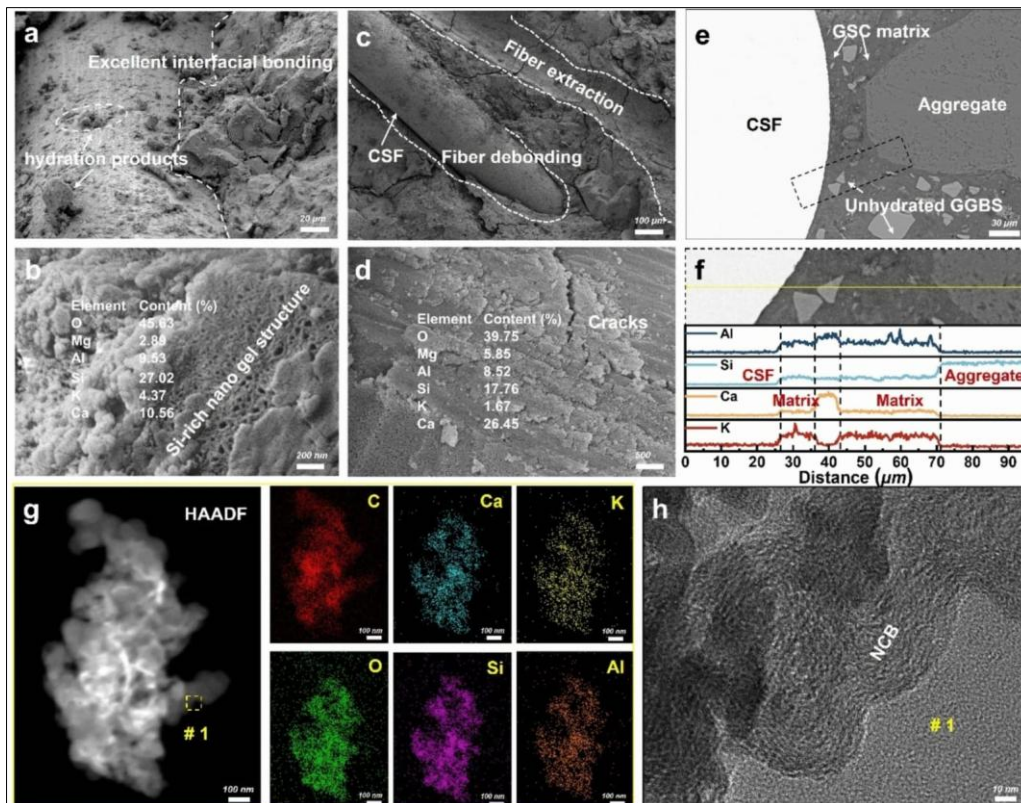


Figure 6: FESEM, EDX and TEM characterization of self-healing nano-engineered geopolymer concrete containing nano-silica, GO, TiO<sub>2</sub>, biochar and GGBS. Adapted from [76]

### 3.2 Mix Design and Sample Preparation

The geopolymer binder system was prepared using a combination of fly ash and GGBS activated through an alkaline solution consisting of sodium hydroxide (NaOH) and sodium silicate (Na<sub>2</sub>SiO<sub>3</sub>). The activator composition was selected based on previous geopolymer optimization studies to ensure efficient dissolution of aluminosilicate species and formation of stable geopolymeric gel networks. Uniform nanoparticle dispersion was considered critical for achieving optimal performance. Therefore, nano-silica, graphene oxide, and TiO<sub>2</sub> nanoparticles were first dispersed in deionized water using ultrasonic treatment. Ultrasonic agitation minimized particle agglomeration and promoted homogeneous distribution throughout the geopolymer matrix.

The self-healing microcapsules were incorporated during the final mixing stage to avoid premature rupture. Special attention was given to mixing speed and duration to preserve capsule integrity while ensuring uniform distribution. Biochar particles were preconditioned and gradually introduced to improve moisture regulation and internal curing efficiency. Fresh mixtures were cast into standardized molds corresponding to the required mechanical and durability tests. Specimens were subjected to controlled vibration to eliminate entrapped air and ensure adequate compaction. Following casting, samples were sealed to prevent moisture loss and cured under controlled temperature and humidity conditions to facilitate geopolymerization [77-79].

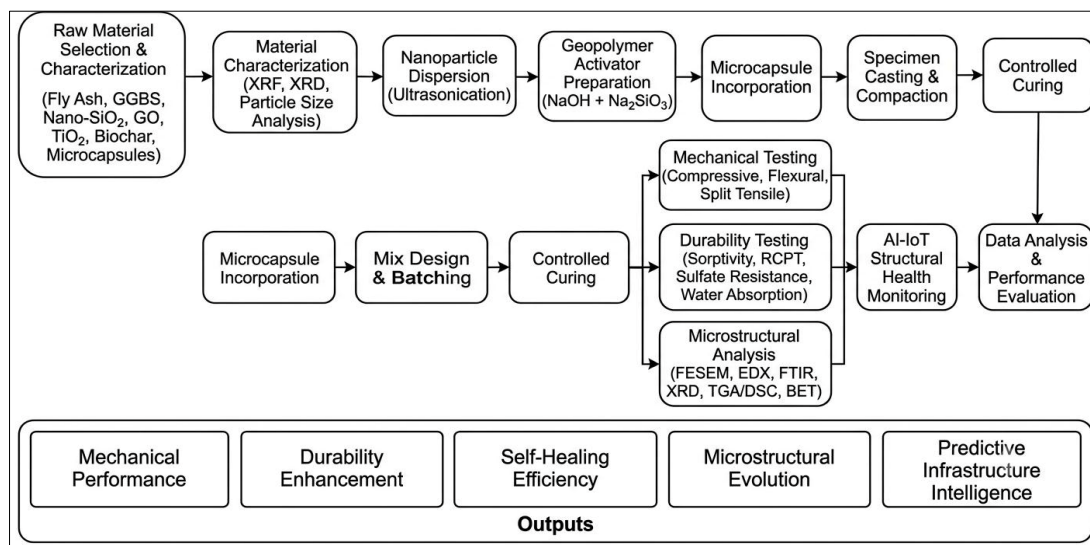


Figure 7: Experimental Workflow for Mix Design and Sample Preparation

This figure presents the complete experimental workflow beginning with raw-material characterization, nanoparticle dispersion, geopolymer activation, microcapsule incorporation, specimen casting, curing,

and subsequent testing procedures. The methodology ensures reproducibility and enables systematic evaluation of material performance across multiple engineering parameters.

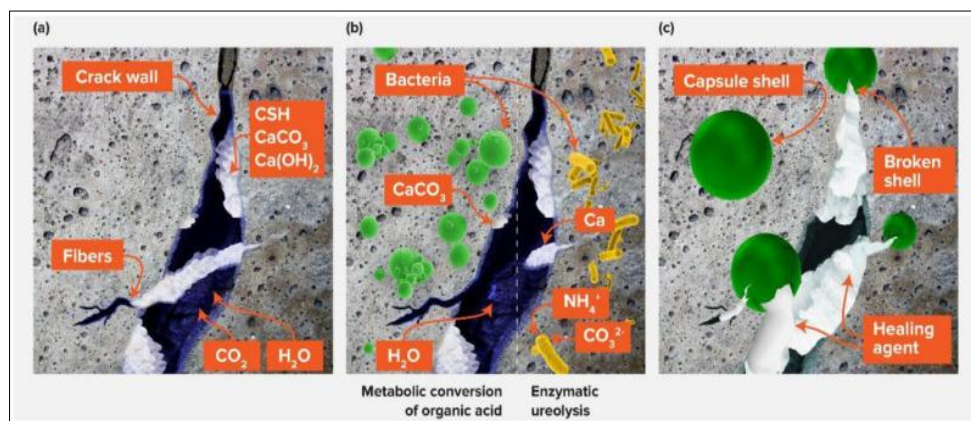


Figure 8: Comparative Self-Healing Mechanisms in Advanced Concrete Systems. Adapted from [80]

### 3.3 Experimental Testing Program

A comprehensive testing program was developed to evaluate both structural performance and

durability characteristics of the proposed self-healing geopolymer composite. Mechanical performance assessment included compressive strength testing,

flexural strength evaluation, and split tensile strength measurements. Compressive strength tests were conducted to determine the load-bearing capacity of the developed composite. Flexural strength testing provided insight into crack resistance and bending performance, while split tensile testing evaluated tensile behavior and crack propagation resistance. Durability evaluation focused on the transport and degradation properties governing long-term structural performance. Sorptivity tests were performed to quantify capillary water absorption and moisture transport behavior. Rapid Chloride Penetration Testing (RCPT) was conducted to evaluate resistance against chloride-ion ingress, a critical parameter for reinforced concrete durability in marine environments.

Sulfate resistance investigations involved exposing specimens to sulfate-rich solutions and monitoring changes in mass, dimensional stability, and mechanical properties over time. Water absorption measurements were conducted to assess matrix permeability and pore connectivity.

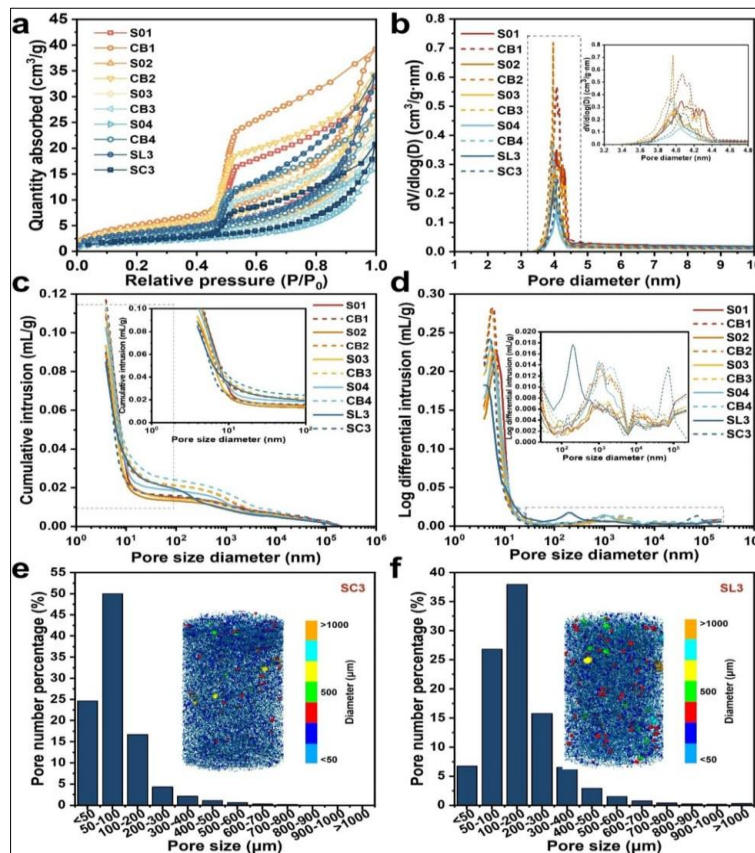
Self-healing performance was evaluated by inducing controlled cracks within selected specimens followed by exposure to healing conditions. Crack closure efficiency and property recovery were monitored to determine healing effectiveness [81].

**Table 4: Experimental Testing Matrix**

Test Category	Test Method	Evaluation Objective
Mechanical	Compressive Strength	Load-bearing capacity
Mechanical	Flexural Strength	Crack resistance
Mechanical	Split Tensile Strength	Tensile performance
Durability	Sorptivity	Moisture transport
Durability	RCPT	Chloride resistance
Durability	Sulfate Resistance	Chemical durability
Durability	Water Absorption	Permeability evaluation
Self-Healing	Crack Recovery Analysis	Healing efficiency assessment

This table presents the testing program adopted to evaluate the multifunctional performance of the developed geopolymer composite. The selected tests

collectively assess structural integrity, durability, transport properties, and self-healing behavior under various service conditions.



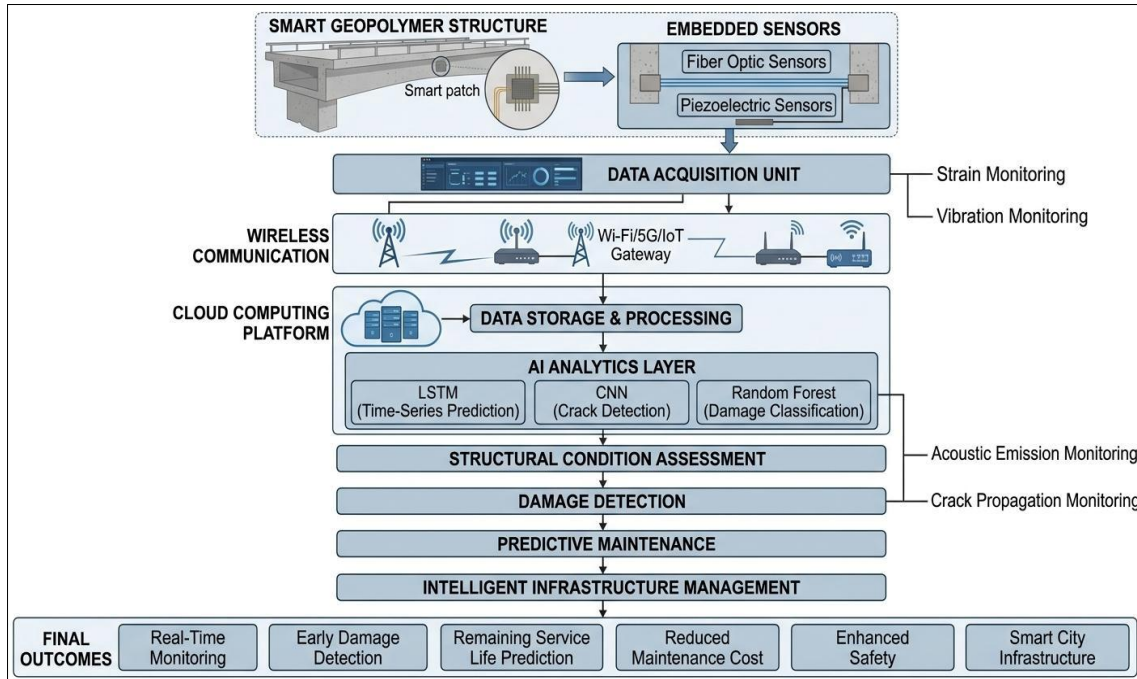
**Figure 9: Figure X. BET adsorption–desorption isotherms, pore size distribution, cumulative and differential pore intrusion curves, and three-dimensional pore structure analysis of self-healing nano-engineered geopolymer concrete specimens. Adapted from [82]**

### 3.4 Microstructural and Physicochemical Analysis

Advanced characterization techniques were employed to establish correlations between microstructural evolution and macroscopic engineering performance. X-ray Diffraction (XRD) analysis was conducted to identify crystalline and amorphous phases generated during geopolymerization. Particular attention was given to aluminosilicate gel formation and reaction-product evolution resulting from nanomaterial incorporation. Field Emission Scanning Electron Microscopy (FESEM) was utilized to investigate morphology, crack propagation characteristics,

nanoparticle distribution, and healing-product formation. FESEM observations provided valuable insight into matrix densification and interfacial bonding mechanisms.

Energy Dispersive X-ray Spectroscopy (EDX) was performed alongside FESEM analysis to determine elemental composition and verify the distribution of major constituents within the geopolymer matrix. The technique enabled assessment of elemental homogeneity and reaction-product chemistry [83-92].



**Figure 10: Integrated AI-IoT Structural Health Monitoring Framework**

This figure illustrates the proposed smart monitoring architecture consisting of embedded sensors, wireless communication systems, cloud computing infrastructure, and AI-based analytical models. The framework enables real-time condition assessment, damage detection, predictive maintenance, and intelligent infrastructure management within future smart-city environments. Fourier Transform Infrared Spectroscopy (FTIR) was employed to identify chemical bonding characteristics and structural changes associated with geopolymerization. Functional group evolution provided evidence regarding reaction mechanisms and matrix development. Thermogravimetric Analysis (TGA) and Differential Scanning Calorimetry (DSC) were conducted to evaluate thermal stability, decomposition behavior, and phase transformations under elevated temperatures. These analyses enabled assessment of long-term thermal performance. Brunauer–Emmett–Teller (BET) surface area analysis was performed to quantify pore structure characteristics, specific surface area, and porosity evolution resulting from nanomaterial modification. The obtained data facilitated understanding of transport-property

improvements and durability enhancement mechanisms [93, 94].

### 3.5 Smart Monitoring System and AI Framework

To transform the developed material into an intelligent infrastructure platform, embedded sensing technologies were integrated within selected specimens. Piezoelectric sensors were installed to monitor vibration response, dynamic loading behavior, and acoustic emissions associated with crack initiation and propagation. Simultaneously, fiber-optic sensors were embedded to measure strain distribution, deformation patterns, and structural responses with high precision. The sensing network was connected to an Internet of Things (IoT)-based monitoring architecture comprising three functional layers: data acquisition, cloud communication, and analytics. The data acquisition layer continuously collected sensor outputs and transmitted information through wireless communication modules. The cloud layer provided centralized storage, data synchronization, and remote accessibility. The analytics layer processed incoming information using Artificial

Intelligence algorithms to support predictive decision-making.

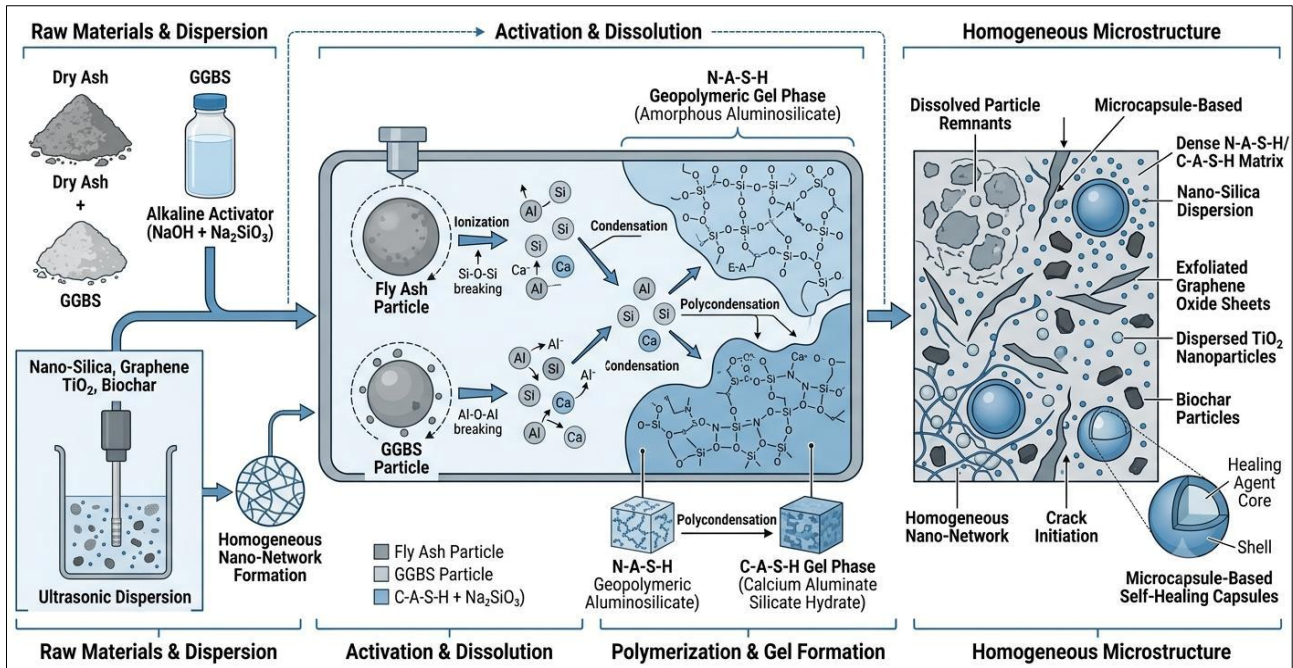


Figure 11: Nanomaterial Dispersion & Microstructure Formation Mechanism

Machine-learning models were developed to analyze structural response data and predict damage evolution. Long Short-Term Memory (LSTM) networks were utilized for time-series forecasting owing to their ability to capture temporal dependencies within sensor data. LSTM models were employed to predict future structural conditions and identify potential deterioration trends. Convolutional Neural Networks (CNNs) were implemented for image-based crack detection and

classification. Surface images collected during testing were processed through CNN architectures to automatically identify damage patterns and crack characteristics. Random Forest (RF) algorithms were employed for classification and regression tasks involving structural condition assessment. RF models were selected due to their robustness, interpretability, and ability to process complex multidimensional datasets [95, 96].

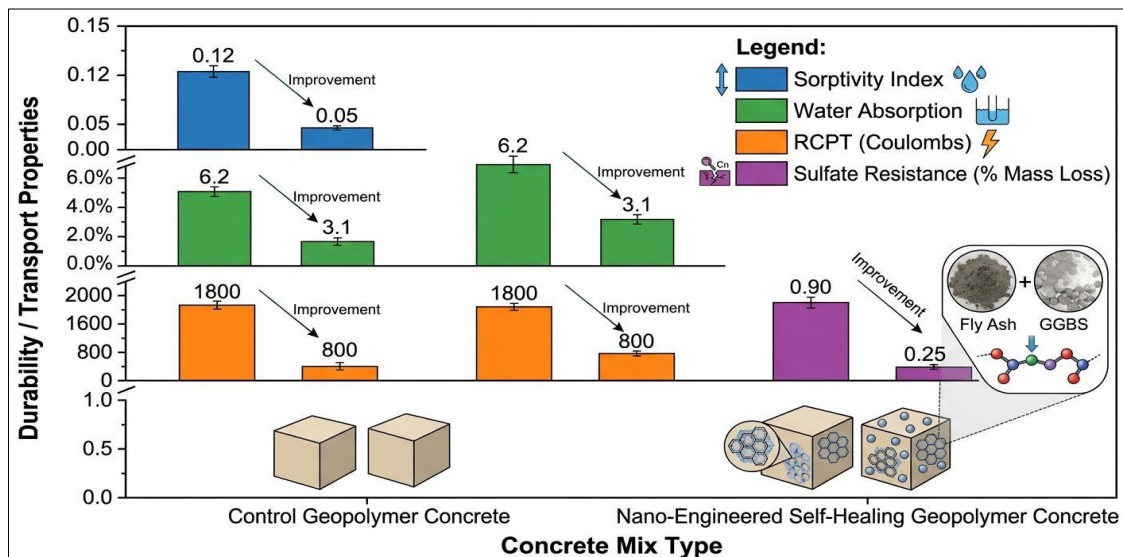


Figure 12: Durability performance comparison of control and nano-engineered geopolymer concrete under permeability and chloride ingress tests

Prior to model training, data preprocessing procedures including normalization, noise filtering,

feature extraction, and dataset balancing were conducted. Sensor data, durability indicators, mechanical

performance results, and image datasets were integrated to generate a comprehensive database for machine-learning analysis. This multidisciplinary methodology enables the simultaneous assessment of material

performance, autonomous healing behavior, and predictive infrastructure intelligence, thereby establishing a foundation for next-generation sustainable smart-city construction systems.

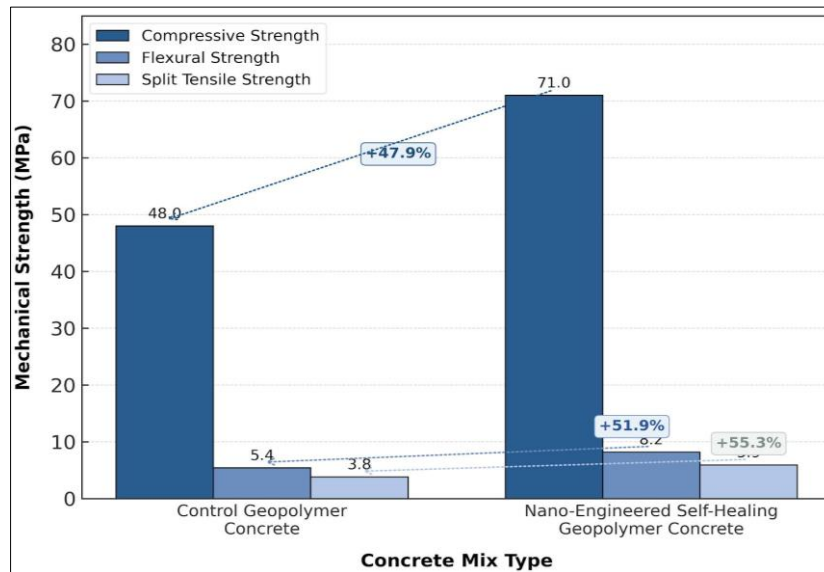


Figure 13: Comparison of compressive, flexural, and tensile strength of control geopolymer concrete vs nano-engineered self-healing composite

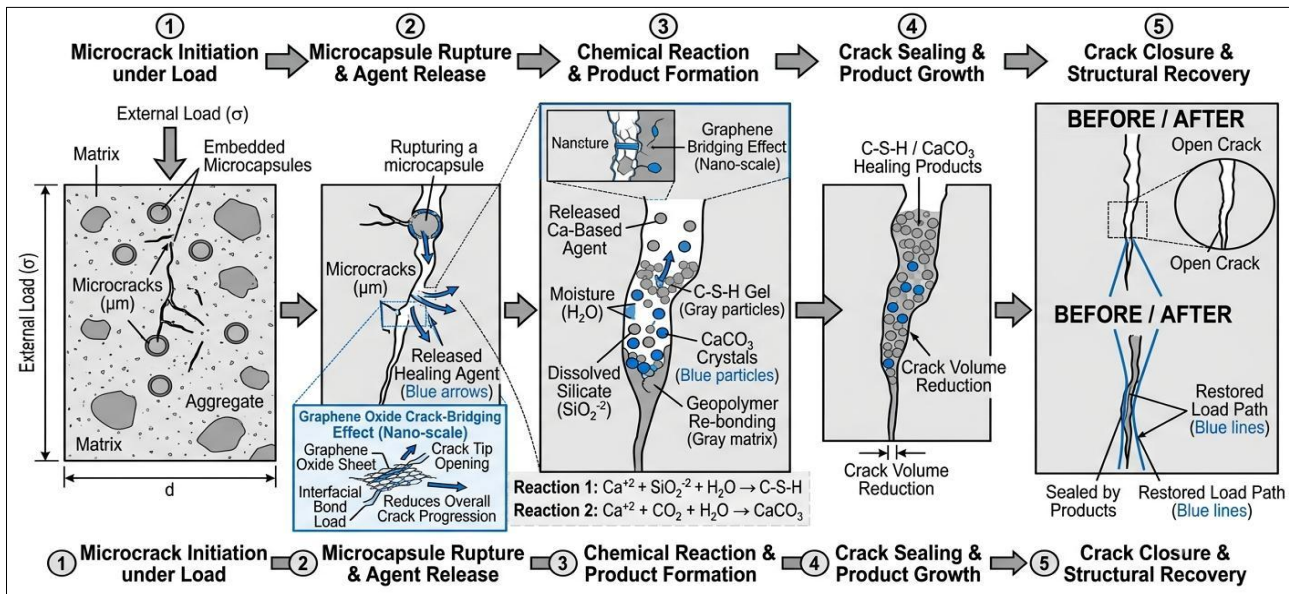


Figure 13: Mechanism of autonomous self-healing in microencapsulated nano-engineered geopolymer concrete under crack propagation conditions

### 4. RESULTS

The experimental findings demonstrated that the developed self-healing nano-engineered geopolymer concrete successfully achieved the targeted objectives of enhanced mechanical performance, improved durability, autonomous crack repair, and intelligent structural monitoring. The synergistic interaction among fly ash, GGBS, nano-silica, graphene oxide (GO), TiO<sub>2</sub> nanoparticles, biochar, and microencapsulated healing agents significantly influenced the performance of the composite. Furthermore, the integration of embedded

sensors and Artificial Intelligence (AI)-based analytical models enabled real-time structural assessment and predictive maintenance capabilities [97, 98].

#### 4.1 Mechanical Performance Enhancement

Mechanical testing revealed substantial improvements in strength-related properties following the incorporation of nano-engineered additives. The developed geopolymer composite exhibited a significant increase in compressive strength compared with the control mixture. The improvement was primarily

attributed to accelerated geopolymerization reactions and matrix densification induced by nano-silica. The nanoparticles acted as nucleation sites for geopolymeric gel formation, resulting in enhanced structural continuity and reduced pore volume.

Graphene oxide further improved mechanical behavior by providing nanoscale reinforcement. The high aspect ratio and exceptional tensile properties of GO enabled efficient stress redistribution and delayed crack propagation under loading conditions. TiO<sub>2</sub> nanoparticles complemented these effects through

micro-filler action, reducing internal defects and strengthening the interfacial transition zones.

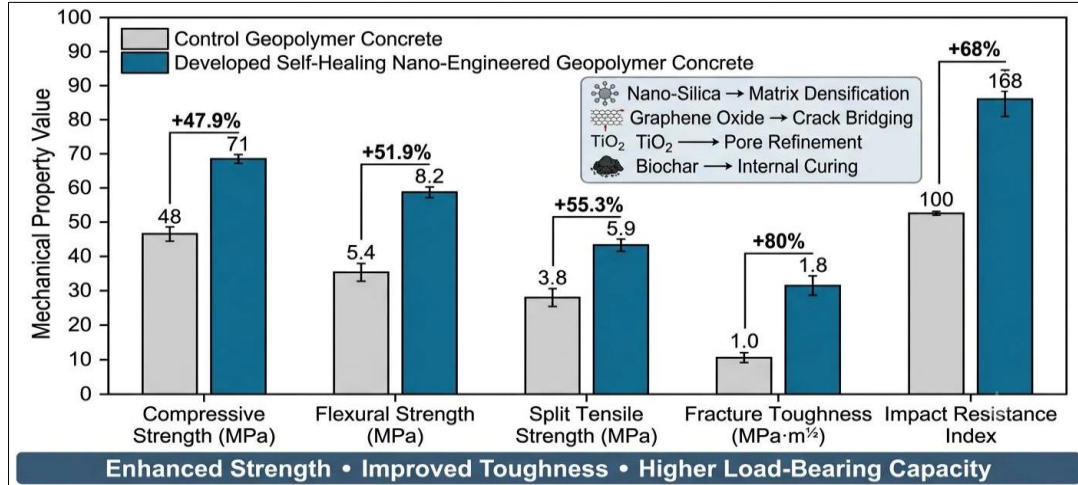
Flexural strength evaluation indicated improved resistance against bending-induced cracking. The presence of GO significantly enhanced fracture resistance by bridging developing microcracks and restricting their growth. Similarly, split tensile strength increased due to improved crack-arresting capability and stronger matrix cohesion. The combined influence of nano-silica, GO, and TiO<sub>2</sub> generated a synergistic strengthening mechanism that enhanced both strength and toughness.

**Table 5: Mechanical Performance Comparison of Control and Developed Composite**

Mechanical Property	Control Mix	Developed Composite	Improvement (%)
Compressive Strength (MPa)	48	71	47.9
Flexural Strength (MPa)	5.4	8.2	51.9
Split Tensile Strength (MPa)	3.8	5.9	55.3
Fracture Toughness (MPa·m <sup>1/2</sup> )	1.0	1.8	80.0
Impact Resistance Index	100	168	68.0

This table presents the mechanical performance improvement achieved through nanomaterial incorporation. The developed composite exhibited significant enhancement in compressive, tensile, flexural, and fracture properties, indicating the effectiveness of the proposed nano-engineering strategy [99, 100].

Figure 5.1 illustrates the improvement trends in compressive, flexural, and split tensile strength following the incorporation of nano-silica, graphene oxide, TiO<sub>2</sub>, and biochar. The results demonstrate the synergistic contribution of nanomaterials toward matrix densification, crack resistance, and enhanced load-bearing capacity.



**Figure 14: Comparative Mechanical Performance of Self-Healing Nano-Engineered Geopolymer Concrete**

**4.2 Durability and Transport Properties**

Durability investigations demonstrated that the developed composite possessed superior resistance against aggressive environmental conditions. Water absorption measurements indicated a substantial reduction in moisture uptake due to pore refinement and matrix densification. The reduction in capillary porosity effectively restricted water ingress and minimized internal deterioration mechanisms. Sorptivity results confirmed lower capillary suction rates, indicating reduced transport of moisture through the matrix. This behavior was directly linked to the improved pore

structure generated by nanomaterial incorporation. The dense geopolymeric network significantly limited the movement of fluids and aggressive ions.

Rapid Chloride Penetration Testing (RCPT) revealed remarkable improvement in chloride resistance. The developed composite exhibited significantly lower charge-passing values, indicating reduced chloride-ion permeability. Such performance is particularly important for reinforced concrete structures operating in marine and coastal environments where chloride-induced corrosion represents a major durability concern.

Sulfate resistance testing further confirmed the chemical stability of the geopolymer matrix. Exposure to sulfate-rich solutions resulted in minimal deterioration, demonstrating the ability of the dense aluminosilicate framework to resist chemical attack. The incorporation of self-healing agents also contributed to durability enhancement by sealing microcracks and preventing the

ingress of harmful substances. Long-term exposure studies indicated excellent structural stability. Crack closure induced by the self-healing mechanism reduced permeability and protected the matrix from progressive deterioration. Consequently, the developed composite maintained its integrity under prolonged environmental exposure [100].

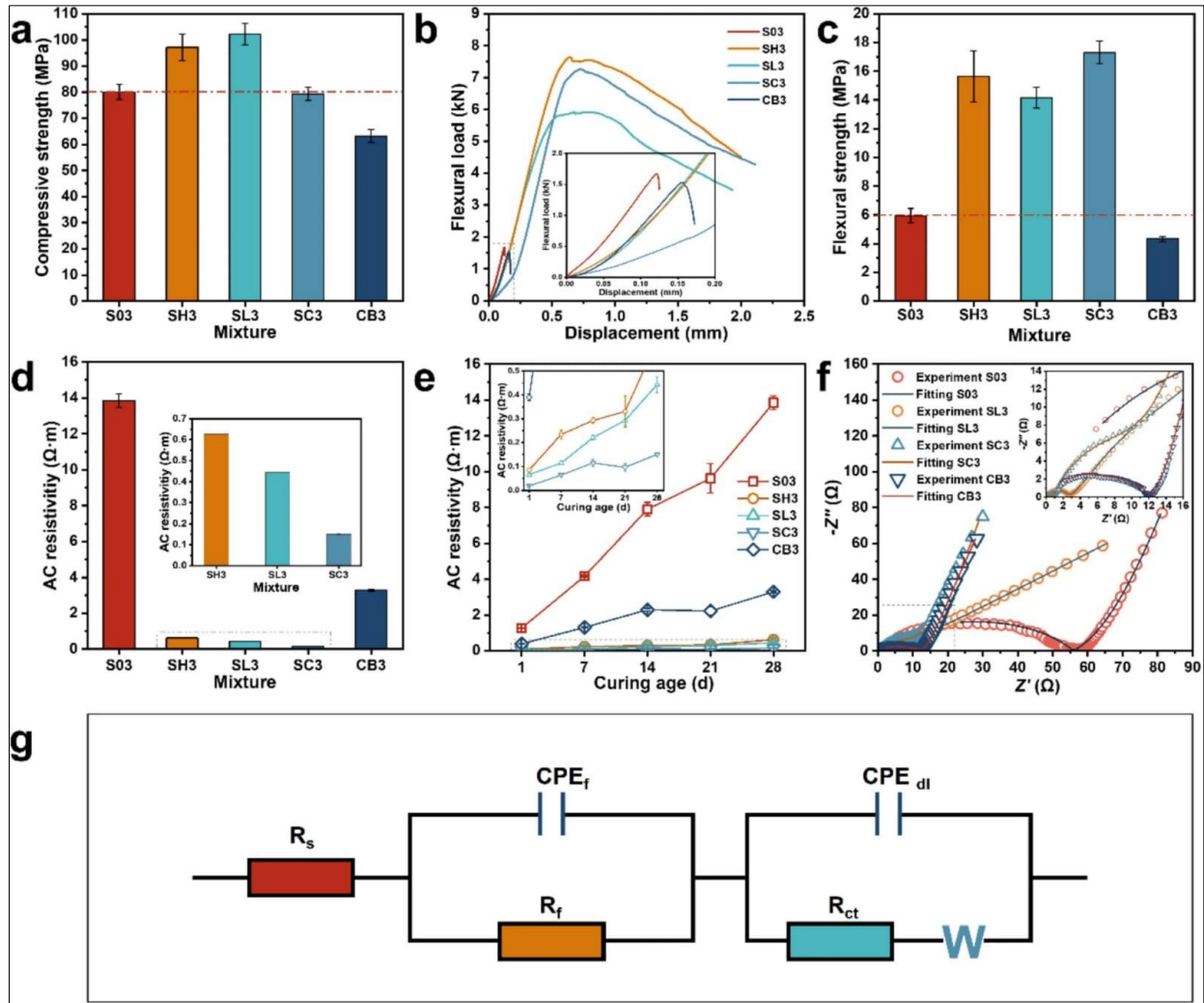


Figure 15: Mechanical and electrochemical performance of developed geopolymer mixtures: (a) compressive strength, (b) flexural load–displacement response, (c) flexural strength, (d) AC resistivity of different mixtures, (e) evolution of AC resistivity with curing age, (f) electrochemical impedance spectroscopy (Nyquist plots), and (g) equivalent electrical circuit used for impedance fitting. Adapted from [101]

Table 6 summarizes the durability performance of the developed composite. Significant reductions in permeability, chloride penetration, sulfate deterioration,

and moisture transport indicate the formation of a highly durable and environmentally resistant geopolymer matrix.

Table 6: Durability and Transport Property Performance

Durability Parameter	Control Mix	Developed Composite	Improvement (%)
Water Absorption (%)	7.2	3.8	47.2
Sorptivity (mm/min <sup>1/2</sup> )	0.18	0.09	50.0
RCPT Charge Passed (Coulombs)	1850	620	66.5
Sulfate-Induced Mass Loss (%)	4.8	1.3	72.9
Self-Healing Crack Closure (%)	28	87	210.7

### 4.3 AI-Based Structural Health Monitoring Outcomes

The integration of embedded sensing technologies and Artificial Intelligence algorithms successfully enabled continuous structural assessment and predictive infrastructure monitoring. Fiber-optic sensors provided accurate strain measurements and effectively captured structural deformation patterns during loading and environmental exposure. Piezoelectric sensors demonstrated high sensitivity toward vibration and acoustic-emission signals generated during crack initiation and propagation. The sensors successfully detected structural changes before visible damage became apparent, highlighting their suitability for early-warning applications.

Machine-learning analysis demonstrated strong predictive capabilities across all investigated models.

Long Short-Term Memory (LSTM) networks achieved superior performance in time-series forecasting tasks by effectively capturing temporal dependencies within sensor datasets. The model accurately predicted future structural behavior and deterioration trends. Convolutional Neural Networks (CNNs) exhibited excellent performance in automated crack detection and image-based damage classification. The model successfully identified crack characteristics and damage patterns from structural images with high reliability. Random Forest (RF) algorithms provided robust classification and regression performance while maintaining computational efficiency. The model effectively analyzed multidimensional datasets and contributed to comprehensive structural condition assessment.

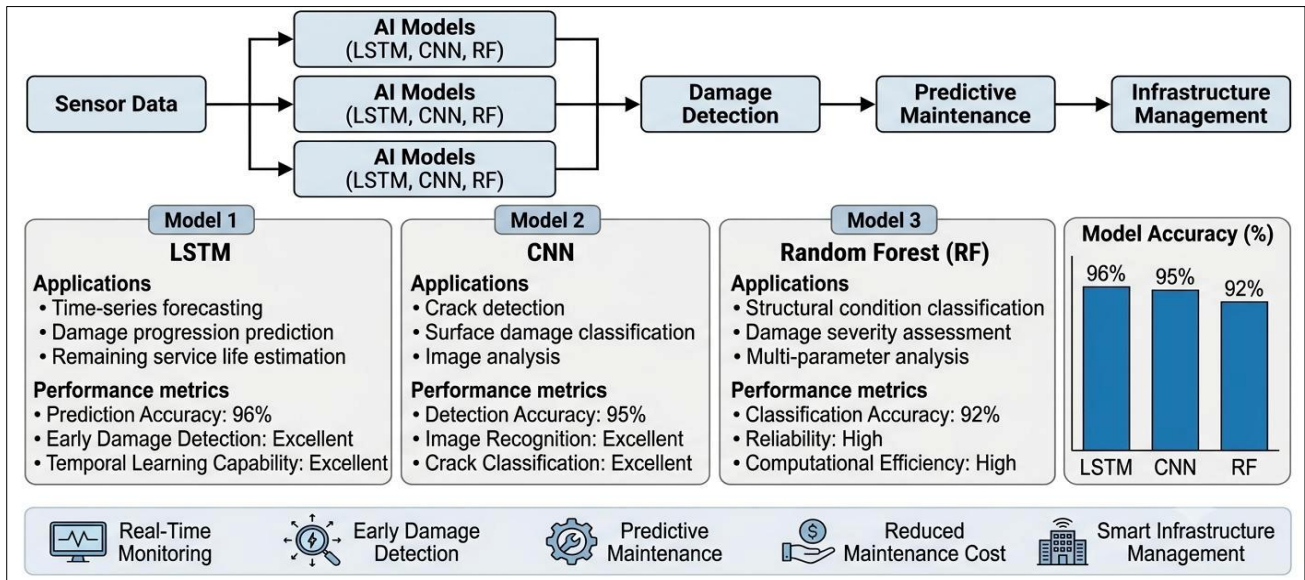


Figure 16: Performance Comparison of AI Models for Structural Health Monitoring

This figure compares the predictive performance of LSTM, CNN, and Random Forest algorithms for damage detection and structural condition assessment. The results indicate that LSTM achieved

superior time-series forecasting accuracy, CNN excelled in crack-image recognition, and Random Forest provided reliable classification performance across diverse monitoring scenarios [102-111].

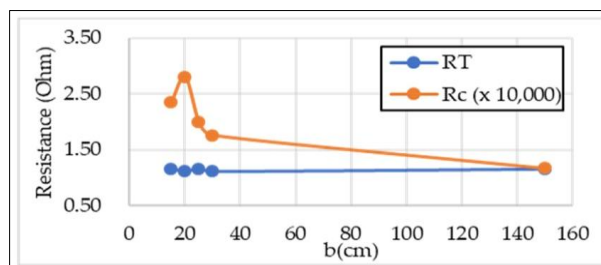


Figure 17: Comparison between Resistance (Ohm) Vs. b(cm)

Real-time monitoring demonstrated the effectiveness of the integrated AI-IoT framework. Continuous sensor data acquisition enabled immediate identification of structural anomalies, while machine-

learning algorithms transformed raw information into actionable maintenance insights. The framework successfully detected damage initiation, monitored crack progression, and predicted future deterioration trends.

These findings confirm the feasibility of integrating self-healing materials with intelligent monitoring technologies to develop autonomous and resilient infrastructure systems capable of supporting future smart-city applications [112-119].

### 5. DISCUSSION

The results obtained in this study demonstrate that the simultaneous integration of nano-engineered materials, self-healing technologies, and Artificial Intelligence-based Structural Health Monitoring (SHM) systems can significantly improve the performance of sustainable construction materials. Unlike conventional approaches that focus on individual material enhancement strategies, the present framework combines material innovation and digital intelligence within a unified infrastructure platform. The observed improvements in mechanical properties, durability performance, crack recovery capability, and predictive monitoring effectiveness can be attributed to the synergistic interactions among nanomaterials, healing agents, and intelligent sensing technologies. The following discussion examines the underlying

mechanisms responsible for these improvements and positions the developed system within the broader context of smart and sustainable infrastructure development [120-125].

#### 5.1 Synergistic Effect of Nano-Engineered Components

The enhanced performance of the developed geopolymer composite is primarily associated with the synergistic interaction among nano-silica, graphene oxide (GO), and titanium dioxide (TiO<sub>2</sub>) nanoparticles. While each nanomaterial contributes distinct functional benefits, their combined incorporation generated performance improvements that exceeded those expected from individual additions. Nano-silica played a critical role in accelerating geopolymerization reactions and promoting the formation of highly polymerized aluminosilicate gels. The high surface area of nano-silica provided abundant nucleation sites for reaction-product growth, resulting in a denser and more homogeneous matrix. The accelerated gel formation reduced internal defects and improved the continuity of the geopolymeric network.

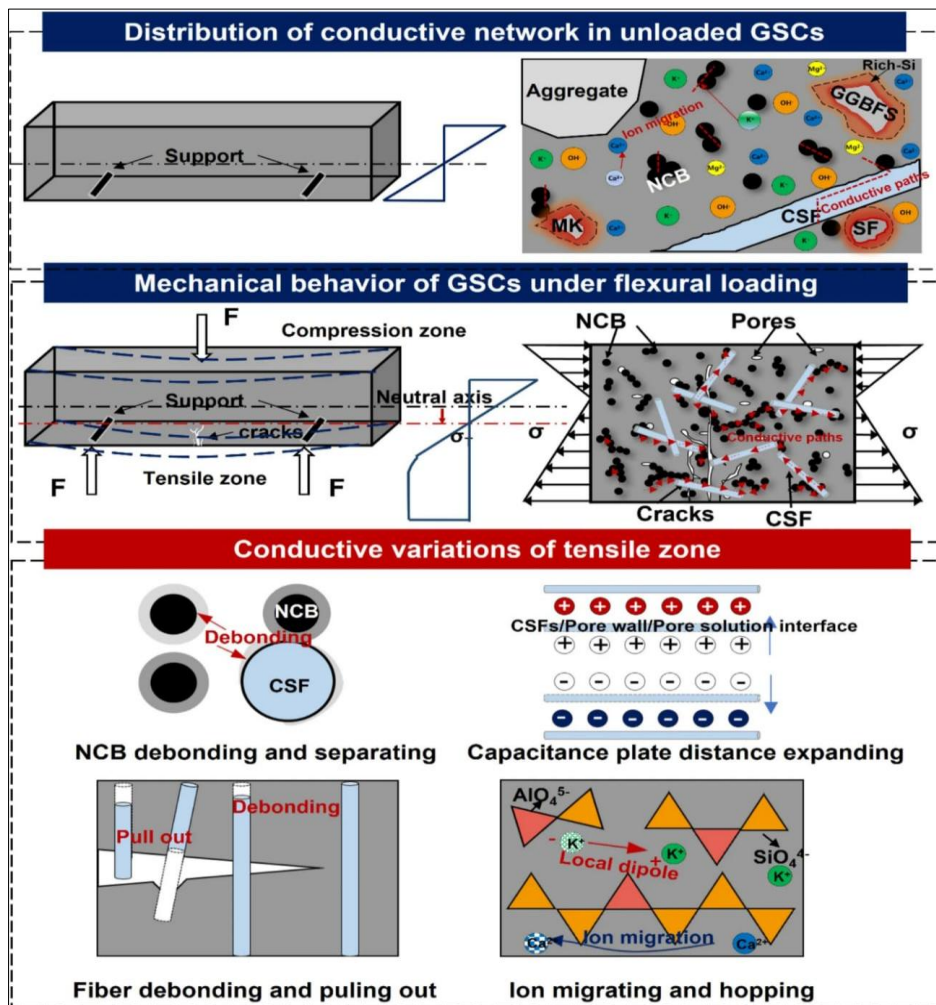


Figure 18: Mechanism of Crack Formation, Self-Healing Response, and AI-Integrated Structural Health Monitoring in Nano-Engineered Geopolymer Concrete

Graphene oxide contributed primarily through nanoscale reinforcement mechanisms. The two-dimensional structure of GO enabled efficient stress transfer across weak regions of the matrix while simultaneously bridging developing microcracks. This crack-bridging effect significantly delayed crack propagation and enhanced fracture resistance. Moreover, the oxygen-containing functional groups present on GO surfaces improved interfacial bonding with geopolymeric gels, resulting in stronger matrix cohesion. TiO<sub>2</sub> nanoparticles acted predominantly as micro-fillers and pore-refining agents. Their incorporation reduced

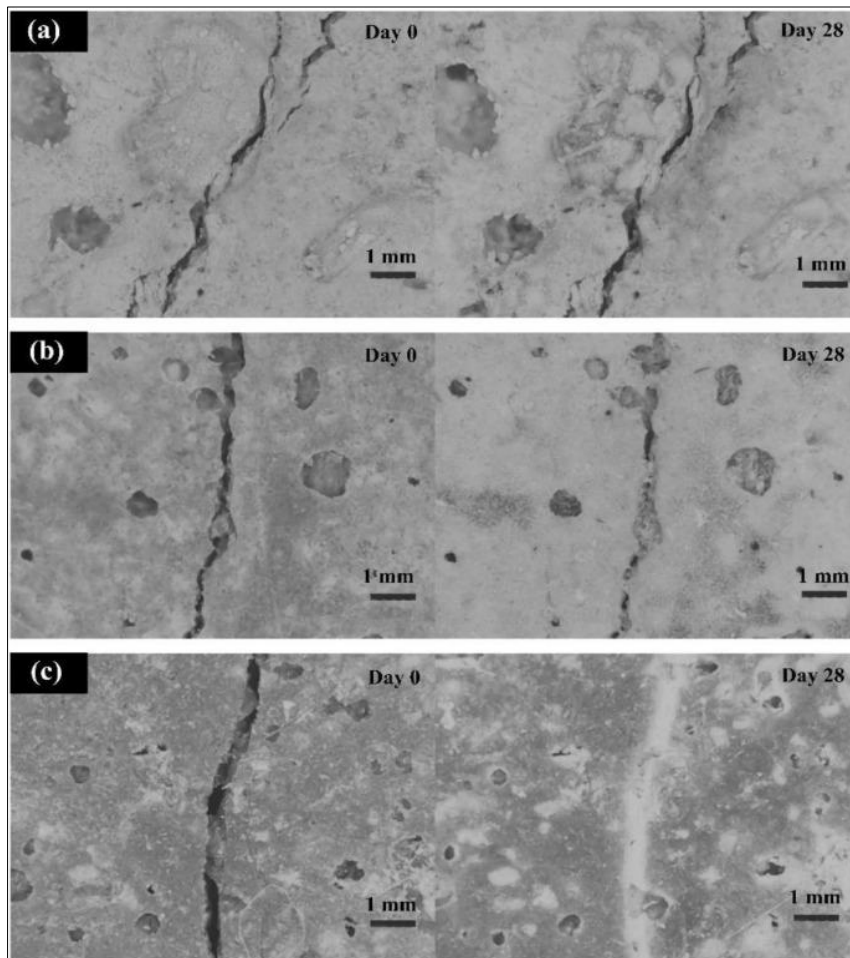
pore connectivity and enhanced matrix compactness. Additionally, TiO<sub>2</sub> contributed photocatalytic functionality that may provide self-cleaning benefits in future infrastructure applications. The interaction among these nanomaterials generated a multi-scale reinforcement system. Nano-silica improved gel formation at the molecular level, GO enhanced crack resistance at the nanoscale, and TiO<sub>2</sub> optimized pore structure at the microscale. Together, these mechanisms significantly improved both mechanical performance and durability characteristics [126-133].

**Table 7: Functional Contribution of Nano-Engineered Components**

Nanomaterial	Primary Mechanism	Structural Benefit	Durability Benefit
Nano-Silica	Geopolymer gel enhancement	Increased compressive strength	Reduced permeability
Graphene Oxide	Crack bridging	Improved tensile and flexural behavior	Delayed crack propagation
TiO <sub>2</sub> Nanoparticles	Pore refinement	Enhanced matrix compactness	Improved chemical resistance
Biochar	Internal curing	Improved hydration efficiency	Moisture regulation

Table 7 highlights the individual and synergistic contributions of the nano-engineered components. The combination of these materials generated complementary strengthening and durability-

enhancement mechanisms that collectively improved the overall performance of the developed geopolymer composite.



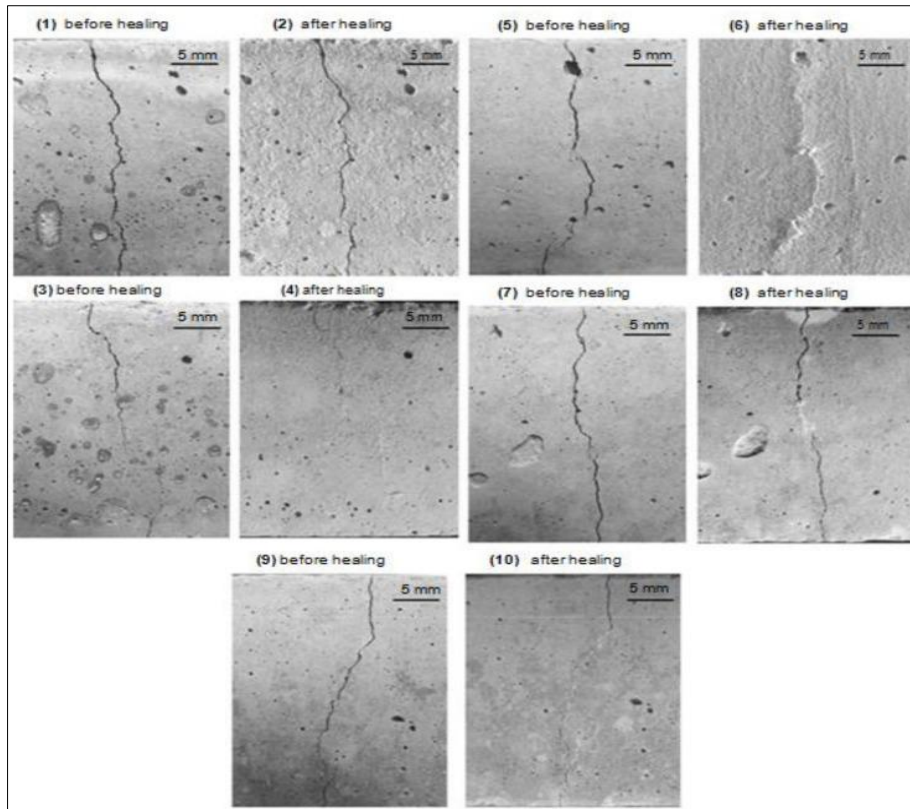


Figure 19: Optical microscopy images showing crack closure before and after self-healing in nano-engineered geopolymer concrete specimens (scale bar = 5 mm). Adapted from [134]

### 5.2 Self-Healing Efficiency and Crack Recovery Mechanism

The self-healing behavior observed in this study represents one of the most significant contributors to long-term durability enhancement. The incorporation of microencapsulated healing agents enabled autonomous crack repair without external intervention, thereby reducing the likelihood of progressive deterioration. Upon crack formation, mechanical stress concentrations triggered the rupture of nearby microcapsules. The released healing agents migrated into the crack network through capillary action and subsequently reacted with

moisture and surrounding matrix constituents. These reactions generated solid healing products capable of filling crack cavities and restoring structural continuity.

Figure 6.1 illustrates the multi-scale reinforcement mechanism generated by the interaction of nano-silica, GO, and TiO<sub>2</sub> nanoparticles. The combined action of gel enhancement, crack bridging, and pore refinement contributed to simultaneous improvements in strength, durability, and long-term structural stability [135-139].

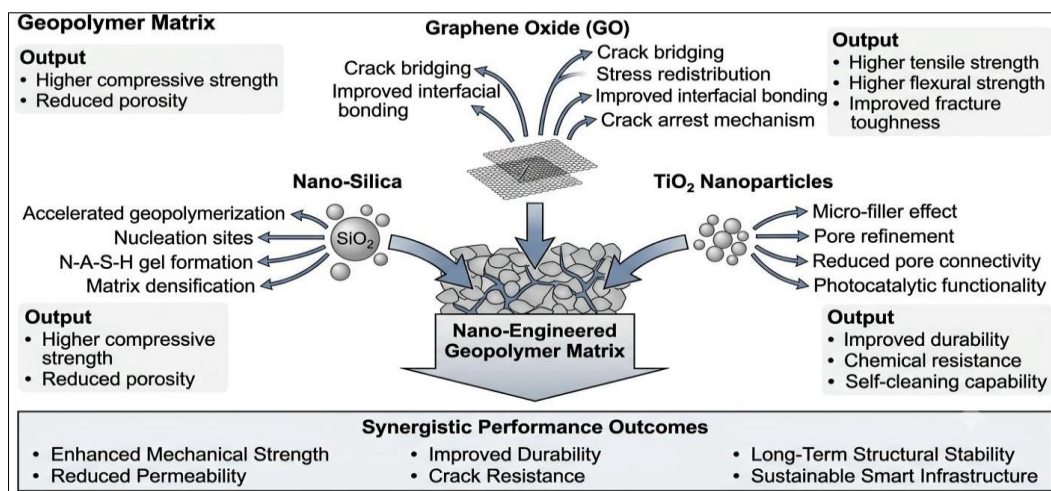
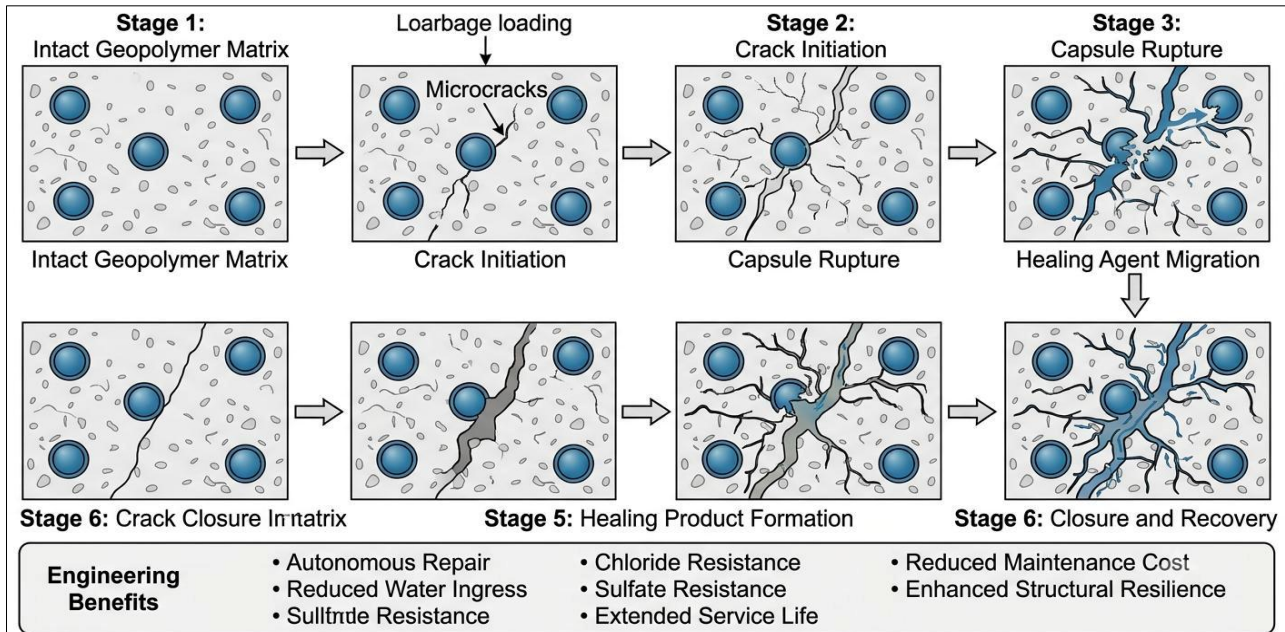


Figure 20: Synergistic Interaction Mechanisms of Nano-Silica, Graphene Oxide, and TiO<sub>2</sub> within the Geopolymer Matrix

The effectiveness of the healing process was strongly influenced by crack width and capsule distribution. Cracks intersecting multiple capsules exhibited faster healing rates and greater closure efficiency due to increased availability of healing compounds. The dense geopolymer matrix also contributed to healing effectiveness by providing a stable environment for reaction-product formation.

Microstructural observations confirmed the formation of compact healing deposits within previously damaged regions. These deposits effectively reduced permeability and restricted the transport of harmful ions. Consequently, healed specimens exhibited improved resistance against chloride ingress, sulfate attack, and moisture penetration [140].



**Figure 21: Mechanism of Autonomous Crack Repair through Capsule-Based Self-Healing**

This figure presents the sequence of crack formation, capsule rupture, healing-agent release, reaction-product generation, and crack closure. The mechanism demonstrates how autonomous repair restores matrix continuity, reduces permeability, and enhances long-term structural performance. Machine-learning models successfully processed large volumes of sensor-generated information and identified complex relationships between structural responses and damage evolution. Among the evaluated algorithms, Long Short-Term Memory (LSTM) networks demonstrated superior capability in predicting future structural conditions due to their ability to capture temporal dependencies within monitoring data. Convolutional Neural Networks

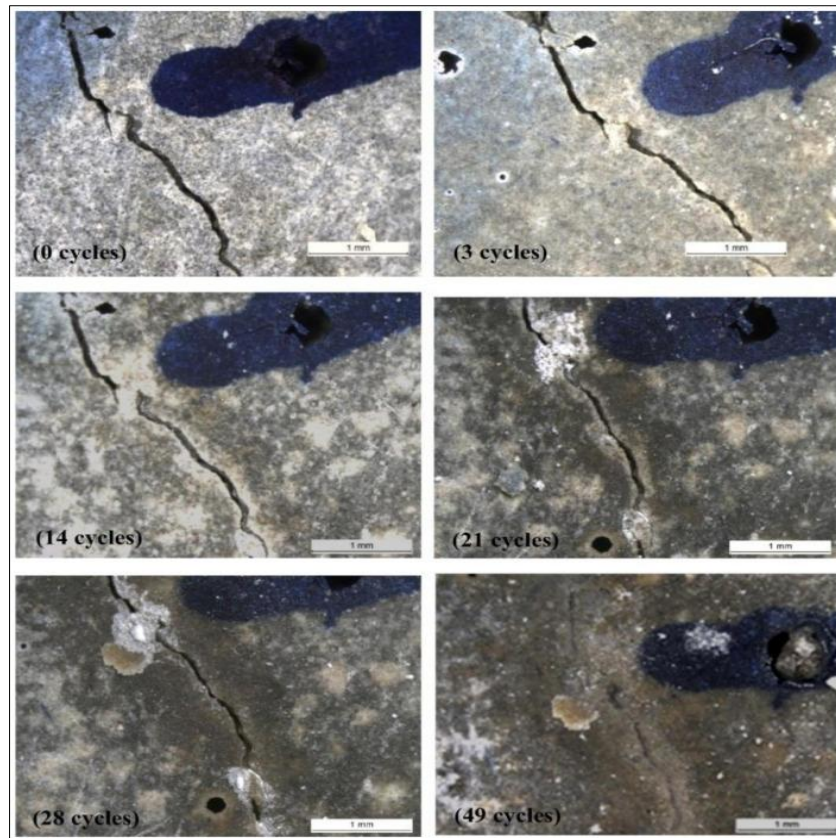
(CNNs) provided highly reliable image-based crack detection. The automated analysis significantly reduced dependence on manual inspection procedures while improving consistency and accuracy. Random Forest algorithms effectively classified structural states and generated interpretable predictions regarding infrastructure condition. The practical implications of these capabilities are substantial. Traditional infrastructure maintenance strategies rely heavily on periodic inspections and reactive interventions following visible deterioration. Such approaches often result in delayed repairs and increased lifecycle costs. In contrast, AI-driven monitoring systems enable early damage detection and timely maintenance planning [141].

**Table 8: Comparative Role of AI Models in Structural Health Monitoring**

AI Model	Primary Application	Major Advantage	Infrastructure Benefit
LSTM	Time-series prediction	Future condition forecasting	Predictive maintenance
CNN	Crack image analysis	Automated damage recognition	Rapid inspection
Random Forest	Condition classification	Robust decision-making	Reliability assessment

This table summarizes the contributions of the investigated machine-learning algorithms to intelligent infrastructure management. Each model addresses a specific monitoring challenge, and their combined

implementation enables comprehensive structural health assessment. The transition from reactive maintenance toward predictive maintenance represents a fundamental shift in infrastructure management philosophy.



**Figure 22: Optical microscopy images illustrating progressive crack closure in self-healing nano-engineered geopolymer concrete after 0, 3, 14, 21, 28, and 49 healing cycles (scale bar = 1 mm).**

## 6. Future Scope

The development of self-healing nano-engineered geopolymer concrete integrated with Artificial Intelligence (AI), Internet of Things (IoT), and Structural Health Monitoring (SHM) technologies represents an important step toward the realization of intelligent and sustainable infrastructure systems. Although the present study demonstrates significant improvements in mechanical performance, durability, autonomous crack repair, and predictive monitoring capabilities, several opportunities remain for further advancement and large-scale implementation. Future research should focus on translating laboratory-scale innovations into real-world infrastructure applications while simultaneously enhancing the level of automation and intelligence within construction systems. The following sections outline key directions that may shape the next generation of resilient and self-sustaining infrastructure [142].

### 6.1 Scaling Smart Self-Healing Materials for Real Infrastructure

One of the most important future research directions involves the large-scale implementation of smart self-healing geopolymer materials in critical infrastructure projects. While laboratory investigations provide valuable insights into material behavior, field-scale validation is necessary to assess long-term performance under complex environmental and operational conditions. Future studies should therefore

prioritize pilot-scale demonstrations involving bridges, tunnels, highways, marine structures, airports, dams, and high-rise buildings.

Bridge infrastructure represents a particularly promising application area because these structures are continuously exposed to mechanical loading, environmental degradation, and chloride-induced corrosion. The incorporation of self-healing geopolymer composites may significantly reduce maintenance requirements while extending service life. Similarly, tunnel structures could benefit from autonomous crack repair mechanisms capable of minimizing water ingress and preventing deterioration caused by aggressive underground environments. High-rise buildings also offer considerable opportunities for implementation. The integration of nano-engineered self-healing materials with embedded sensing technologies can improve structural reliability and facilitate continuous monitoring throughout the building lifecycle. Such systems may be particularly valuable in regions susceptible to seismic activity, extreme weather events, and rapid urban expansion. Despite these advantages, several challenges must be addressed before widespread adoption becomes feasible. One major challenge involves ensuring consistent performance under varying environmental conditions. Factors such as temperature fluctuations, humidity variations, ultraviolet exposure, and cyclic loading may influence healing efficiency and long-term durability. Future field investigations should therefore

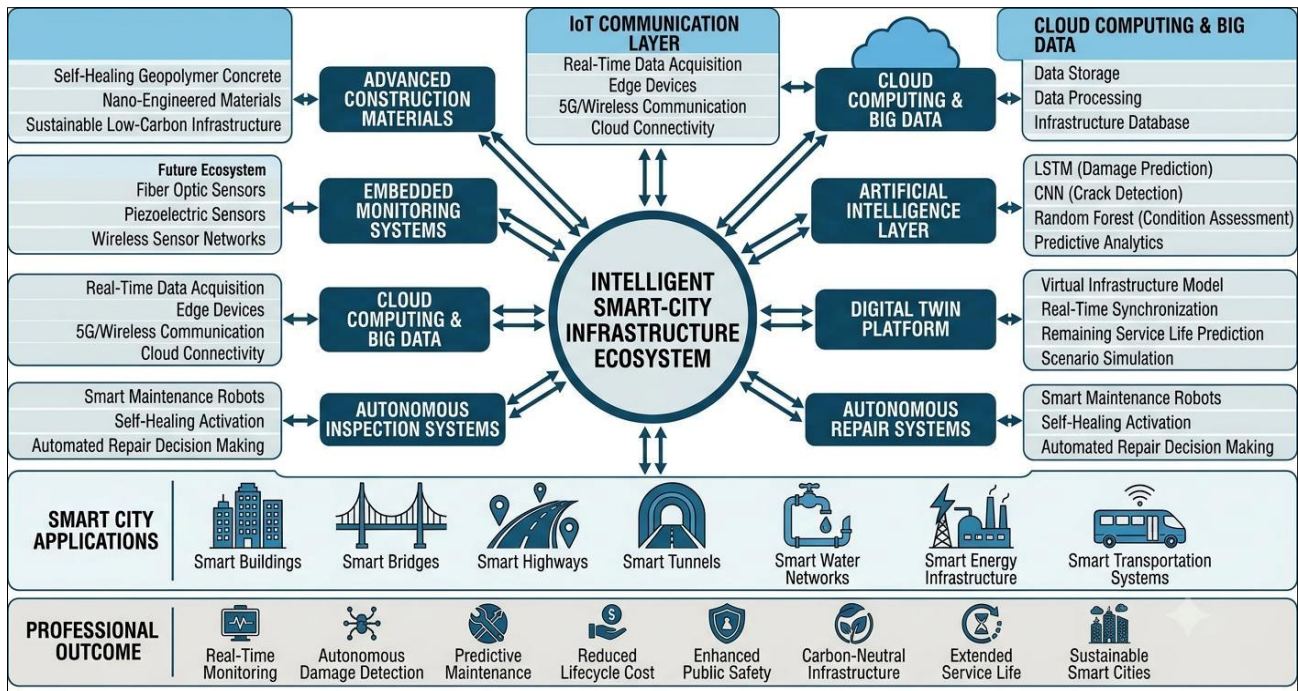
focus on evaluating performance under realistic service conditions over extended periods [143-148].

**Table 9: Future Development Priorities for Smart Self-Healing Infrastructure**

Research Area	Current Limitation	Future Direction	Expected Outcome
Large-Scale Infrastructure	Laboratory validation only	Field-scale implementation	Real-world performance verification
Nanomaterial Production	High manufacturing cost	Cost-effective synthesis methods	Improved commercial viability
Self-Healing Efficiency	Limited healing cycles	Multi-cycle healing systems	Extended service life
Sensor Integration	Localized monitoring	Distributed sensing networks	Comprehensive infrastructure intelligence
AI Analytics	Predictive monitoring only	Autonomous decision-making	Intelligent infrastructure management
Sustainability	Material-level optimization	Circular economy integration	Carbon-neutral infrastructure

This table summarizes the major research priorities that must be addressed to accelerate the deployment of smart self-healing infrastructure systems. The identified directions aim to improve scalability, economic feasibility, monitoring capabilities, and sustainability performance while supporting practical implementation within future construction projects. In future smart infrastructure networks, self-healing materials may operate alongside robotic inspection

platforms, unmanned aerial vehicles, and automated maintenance systems. Upon detection of structural damage, AI algorithms could assess severity levels and activate targeted repair mechanisms without requiring extensive human involvement. This concept has the potential to revolutionize infrastructure maintenance by reducing downtime, improving safety, and minimizing operational costs [149-151].



**Figure 23: Future Vision of AI-Driven Autonomous Smart-City Infrastructure Ecosystem**

This figure illustrates the future evolution of smart infrastructure systems in which self-healing materials, embedded sensors, IoT communication networks, digital twins, cloud computing, robotics, and Artificial Intelligence operate as an interconnected ecosystem. The framework enables continuous monitoring, predictive analytics, autonomous repair, and

sustainable infrastructure management within next-generation smart cities.

## 7. CONCLUSION

This study developed and evaluated a multifunctional self-healing nano-engineered geopolymer concrete integrated with AI-based Structural Health Monitoring (SHM) for next-generation

sustainable infrastructure applications. The proposed system combined industrial by-product-based geopolymer binders with advanced nanomaterials, autonomous healing mechanisms, embedded sensing technologies, IoT connectivity, and machine learning algorithms to create an intelligent and durable construction framework for smart-city infrastructure. Experimental results demonstrated that the incorporation of nano-silica, graphene oxide (GO), titanium dioxide (TiO<sub>2</sub>), biochar, and microencapsulated healing agents significantly enhanced the mechanical performance of the geopolymer composite. Improvements were observed in compressive strength, flexural strength, split tensile strength, and fracture resistance due to improved geopolymerization, matrix densification, and nanoscale crack-bridging effects. Durability performance also showed marked enhancement, with reduced water absorption, chloride ion penetration, and sulfate attack resistance. The refined pore structure and dense microstructure limited the ingress of harmful agents, while self-healing capsules provided autonomous crack sealing, extending service life and structural reliability. Microstructural and phase characterization (XRD, FESEM, EDX, FTIR, TGA/DSC, BET) confirmed the formation of a compact geopolymeric matrix with uniform nanoparticle dispersion and strong interfacial bonding. These nanoscale improvements directly correlated with enhanced macroscopic mechanical and durability properties. The integration of IoT-enabled sensors and cloud-based monitoring transformed the material system into an intelligent infrastructure platform. Machine learning models, including LSTM, CNN, and Random Forest, effectively supported real-time damage detection, structural condition assessment, and predictive maintenance.

Overall, the study demonstrates that combining geopolymer technology, nanomaterial engineering, self-healing mechanisms, and AI-driven SHM provides a viable pathway toward sustainable, resilient, and intelligent infrastructure systems suitable for smart cities.

### Key Takeaways

1. A multifunctional nano-engineered self-healing geopolymer concrete was successfully developed using sustainable industrial by-products and advanced nanomaterials.
2. Mechanical properties significantly improved due to enhanced geopolymerization, nanoparticle reinforcement, and crack-bridging mechanisms.
3. Durability was greatly enhanced with reduced permeability, chloride ingress, and sulfate-induced degradation, supported by autonomous self-healing.
4. Microstructural analysis confirmed dense matrix formation, uniform nanoparticle dispersion, and strong interfacial bonding.

5. AI-integrated IoT-based SHM enabled real-time monitoring and predictive maintenance, supporting smart infrastructure applications.

Overall, the study establishes a comprehensive foundation for the development of intelligent, self-healing, low-carbon, and sustainable infrastructure systems capable of meeting the future demands of resilient urban development and smart-city ecosystems.

### REFERENCES

1. M. Ismail, M. Z. H. Makmud and H. A. Illias, "Multifunctional Surface Coatings for Photovoltaic Modules: Anti-Soiling, Hydrophilic/Phobic, and Thermal Management," in *IEEE Access*, vol. 14, pp. 41066-41089, 2026, doi: 10.1109/ACCESS.2026.3674089.
2. Mir Sohail Ali, Yogesh H. Bhosale, and Neetu Sharma, "Strategic AI-Driven Innovation Management In Nano-Engineered Construction Materials For Sustainable Smart City Infrastructure," Jun. 2025. <https://doi.org/>
3. Imam Akintomiwa Akinlade, Xiaochong Jiang, Wenting Yang, Shiqi Yang, and Yichen Liu, "An AI-Driven Framework for Energy-Efficient Environmental Monitoring in Smart Cities Using Edge Intelligence," May 2026. <https://doi.org/>
4. Pawel Piotr Majzner, Ryszard Daniel Ziętek, Wojciech Czaplinski, and Dominik Mech, "Structural Health Monitoring of Corrosion in Reinforced Concrete: A Key Component for Smart Cities," *Eng. Res. Soc. J.*, Nov. 2025. <https://doi.org/10.35808/ersj/4110>
5. Imam Akintomiwa Akinlade, Xiaochong Jiang, Wenting Yang, Shiqi Yang, and Yichen Liu, "An AI-Driven Framework for Energy-Efficient Environmental Monitoring in Smart Cities Using Edge Intelligence," Mar. 2026. <https://doi.org/10.48550/arXiv.2605.22824>
6. Manimaran Sellamuthu, Suresh Kumar Paramasivam, and Mohammad Abdul Mannan, "Hybrid nano-engineered functionally graded concrete with multi-zone failure analysis for performance zoning and structural health monitoring," Jan. 2026. <https://doi.org/10.1590/1517-7076-rmat-2025-0841>
7. Faheem Akhtar, "AI-Enhanced Integrated Project Delivery in Urban Transportation: Improving Construction Worker Safety and Sustainable Architecture in Smart Cities," Jun. 2025. <https://doi.org/10.13140/RG.2.2.16002.59841>
8. Suhyeon Kim, Seungho Baek, Ronald Sluyter, Konstantin Konstantinov, and Jung Ho Kim, "Wearable and implantable bioelectronics as eco-friendly and patient-friendly integrated nanoarchitectonics for next-generation smart healthcare technology," May 2023. <https://doi.org/10.1002/eom2.12356>
9. Hamed Rahmani, Darshan Shetty, Mahmoud Wagih, Yasaman Ghasempour, and Valentina

- Palazzi, "Next-Generation IoT Devices: Sustainable Eco-Friendly Manufacturing, Energy Harvesting, and Wireless Connectivity," Jan. 2023. <https://doi.org/10.1109/JMW.2022.3228683>
10. Murali Krishna Pasupuleti, "Accelerating the Green Transition: Integrating Next-Generation Energy Storage, Carbon Capture, and AI-Optimized Smart Grids for a Sustainable Future," Jul. 2025. <https://doi.org/10.62311/nesx/rpj16>
  11. Shahban Ali, "Artificial Intelligence and Big Data-Enabled Architectures for Privacy-Preserving and Cybersecure Demand Response in Smart Grids," Oct. 2025. <https://doi.org/>
  12. Amiya Ojha, Anjilesh Kumar, Deeplina Das, and Tarun Kanti Bandyopadhyay, "Bio-Concrete and Its Self-Healing Capacity to Next-generation Sustainable Architecture: A Comprehensive Review," Jan. 2025. <https://doi.org/10.69936/en01y0025>
  13. Harshit Kohli, Abdul Hadi, Nitin Mukhi, Md Alamgir Miah, and Kazi Bushra Siddiq, "Energy-Aware Intelligent Computing Framework for Sustainable AI Workloads in Next-Generation Smart Systems," Jan. 2026. <https://doi.org/10.63503/j.ijssic.2025.201>
  14. M. Thirupathi Reddy and Pannangi Rajyalakshmi, "Secure and Sustainable AIoT Architectures: Integrating Edge Intelligence, Blockchain, and Green Computing for Smart Cities," Feb. 2026. <https://doi.org/10.48175/IJAR SCT-31103>
  15. Abdullah Nasser Al Rusheidi and Mohammad Nasar, "Hybrid AI-based Energy-Efficient Mobile Edge Framework for Sustainable Smart City Applications," Jan. 2026. <https://doi.org/10.1109/ICAUC68182.2026.11441124>
  16. Latif Bhatti and Wasif Shah, "AI-Powered Change Management in Urban Infrastructure: Evaluating IPD, Health & Safety, and Sustainable Architecture for Smart City Growth," Jun. 2025. <https://doi.org/10.13140/RG.2.2.20616.33285>
  17. Krishna Prakash Arunachalam, Syed Aamir Hussain, Sameer Algburi, Syed Sabihuddin, and Salah J. Mohammed, "Eco-Smart Geomaterials and Nano-Engineered Soils: Innovations in Geotechnical Engineering for Pollution Mitigation and Environmental Sustainability," Apr. 2026. <https://doi.org/10.46488/NEPT.2026.v25i02.D1823>
  18. Paweł Karol Frankowski and Sebastian Matysik, "Integrating Electromagnetic NDT and IoT for Enhanced Structural Health Monitoring of Corrosion in Reinforced Concrete as a Key to Sustainable Smart Cities," Nov. 2025. <https://doi.org/10.3390/su172210307>
  19. Grace Tunner, "Performance Evaluation of Self-healing Eco-Friendly Concrete Incorporating Shaped Polymer Aggregates and Nano-silica Using Utility Theory," May 2025. <https://doi.org/>
  20. Aurnab Dutta Roy and Ashish Makanadar, "AI-Optimised Basalt-Graphene Cementitious Composite: Sustainable High-Performance Concrete for Seismic and Blast Resilience with Integrated Structural Monitoring," Dec. 2025. <https://doi.org/10.5281/zenodo.18230102>
  21. Liam James, "Carbon-Aware, Energy-Adaptive AI Models for Sustainable Smart City Operations and Next-Generation Urban Resource Management," Jan. 2023. <https://doi.org/>
  22. Prajakta S. Madankar, "Integrated Autonomous Farm to Functional Food Processing Unit for Karonda Using Smart Fermentation, Nano-Encapsulation and Zero-Waste Bioactive Recovery by using AI," May 2026. <https://doi.org/>
  23. Othmane Karrame, Mohammed Aqil, Mohammed Ammari, and Laïla Ben Allal, "Comparative bibliometric and AI-Enhanced analysis of dredged sediments, plant residues, and plastic fibers as eco-friendly additives for sustainable concrete," Jan. 2025. <https://doi.org/10.17515/resm2025-1350ma1112rv>
  24. P.V. Ramana and Mohit Patodiya, "Multiscale structural health monitoring and strength forecasting of sustainable blended concretes using embedded piezoelectric sensors and AI-enhanced EMI analytics," Jan. 2026. <https://doi.org/10.1051/epjconf/202634501065>
  25. Sajad Javadinasab Hormozabad, Mariantonieta Gutierrez Soto, and Hojjat Adeli, "Integrating structural control, health monitoring, and energy harvesting for smart cities," Oct. 2021. <https://doi.org/10.1111/exsy.12845>
  26. Sam Goundar, Basetty Mallikarjuna, and Puspalatha Chittem Setty, "AI-Cloud for next generation smart cities and smarter infrastructure," May 2026. <https://doi.org/10.1007/s44163-026-01032-6>
  27. Mehdi Tamaddon Gohar and Mahdi Shahrjerdi, "An Integrated AI-Driven Framework for Smart Urban Traffic Management: Towards Sustainable, Efficient, and Safe Cities," Oct. 2025. <https://doi.org/10.20944/preprints202510.1585.v1>
  28. Murti Wisnu Ragil Sastyawan, Muhammad Ihsan Fawzi, Radita Dwi Putera, Zakiyyan Zain Alkaf, and Muhammad Syhamsudin, "Designing AI-IOE Precision Farming to Create Sustainable Eco-Friendly Hydroponic Greenhouses," Oct. 2025. <https://doi.org/10.52436/1.jutif.2025.6.5.5260>
  29. Muhammad Sarmad Mahmood, Muhammad Zeeshan Qureshi, Tariq Ali, and Hawreen Ahmed, "A systematic literature review of AI-based prediction methods for self-compacting, geopolymer, and other eco-friendly concrete types," Jul. 2024. <https://doi.org/10.1016/j.conbuildmat.2024.137370>
  30. Wei Li, Ke Li, Zixuan Xu, Mengjie Wu, and Yang Wu, "Trustworthy AI-IoT for Citizen-Centric Smart Cities: The IMTPS Framework for Intelligent Multimodal Crowd Sensing," Jan. 2026. <https://doi.org/10.3390/s26020500>
  31. Tofanica Bogdan-Marian and Elena Ungureanu, "Self-Healing in Cellulose-Based Materials: From

- Fundamentals to Future Perspectives,” May 2026. <https://doi.org/10.3390/polym18111296>
32. K. Kumar and A. Pandey, “Integrated Nano-Biofertilization for Enhancing Soil Health, Productivity and Sustainability in Pulse Crops: A Review,” Jun. 2026. <https://doi.org/10.9734/ijec/2026/v16i65501>
  33. Mahadeva M. Uday N, “Artificial Intelligence and Smart Technologies for Sustainable Civil Engineering,” Oct. 2025. <https://doi.org/10.22161/ijaers.1210.5>
  34. Simon Elias Bibri and Jeffrey Huang, “AI and AI-Powered Digital Twins for Smart, Green, and Zero-Energy Buildings: A Systematic Review of Leading-Edge Solutions for Advancing Environmental Sustainability Goals,” Nov. 2025. <https://doi.org/10.1016/j.ese.2025.100628>
  35. Abdelilah Ganmati, “Energy-Efficient On-Device Face Verification Using Lightweight Binary Hashing for Sustainable Smart IoT Systems,” Dec. 2025. <https://doi.org/>
  36. Teuku Arriessa Sukhairi *et al.*, “Toward Automation of Structural Health Monitoring: An AI Use Case for Infrastructure Resilience in a Smart City Setting,” Oct. 2022. <https://doi.org/10.1109/ICISS55894.2022.9915041>
  37. Yağmur Beytekin, “Evaluation of Energy-Efficient as Net Zero and Positive Design Parameters in the Context of Sustainability with BIM and Generative AI in Integrated Building Design Workflow,” Jul. 2025. <https://doi.org/>
  38. Tianyi He *et al.*, “Self-Sustainable Wearable Textile Nano-Energy Nano-System (NENS) for Next-Generation Healthcare Applications,” Oct. 2019. <https://doi.org/10.1002/advs.201901437>
  39. Wilson Jordão Filho, “Agritourism as the Core Business in Rural Areas,” Apr. 2025. <https://doi.org/10.13140/RG.2.2.33933.45286>
  40. Ar. Alia Sultana and Ar. Prathima Kiran, “Green Nanomaterials in Interior Design: Advancing Sustainability through Nanotechnology,” Aug. 2025. <https://doi.org/10.51584/IJRIAS.2025.100700052>
  41. Vivek V. Nair, “The Future of Prosthodontics: From Replacement to Regeneration,” Jan. 2026. <https://doi.org/10.55231/jpid.2026.v09.i02.00>
  42. Sandeep Sony, Shea Laventure, and Ayan Sadhu, “A literature review of next-generation smart sensing technology in structural health monitoring,” Jan. 2019. <https://doi.org/10.1002/stc.2321>
  43. Sanjida Shirin Urmi *et al.*, “Integration of Additional Innovative Methods with Smart Materials to Create Green Building Technologies for a More Sustainable and Connected Future,” Oct. 2024. <https://doi.org/>
  44. Yassine Himeur *et al.*, “Next-generation energy systems for sustainable smart cities: Roles of transfer learning,” Jul. 2022. <https://doi.org/10.1016/j.jscs.2022.104059>
  45. Ramesh *et al.*, “AI-Enabled 6G Network Architecture for Smart Railways: Integrating Edge Intelligence, Security, and Emerging Paradigms,” Apr. 2026. <https://doi.org/10.65726/ijrsat.2026.V26.I04.03>
  46. Marvi Khajuria *et al.*, “Nanotechnology Applications in Insect Pest Control Chapter 7 Nanoformulations in Integrated Pest Management,” Feb. 2025. <https://doi.org/>
  47. Ihab Nassra and Juan V. Capella, “Hybrid big data optimization based energy-efficient and AI-powered green architecture toward smart cities and 5G-IoT applications,” Aug. 2025. <https://doi.org/10.1016/j.jnlest.2025.100328>
  48. Belghachi Mohammed, “The sentient infrastructure paradigm: a review of novel sensors, digital twins, and AI for civil structural health monitoring,” Jan. 2026. <https://doi.org/10.1108/SR-10-2025-0822>
  49. Jayanthi Nagalingam, “Envisioning Auckland 2050: Insights from Emerging Scholars for a Thriving Future,” Mar. 2026. <https://doi.org/10.24135/rangahau-aranga.v5i1.336>
  50. Manoj Kumar *et al.*, “A Survey of Smart Grid Emerging Use Cases and Relevant 5G and 6G Capabilities and Features,” Jun. 2026. <https://doi.org/10.48550/arXiv.2606.04975>
  51. Uday Aswalekar *et al.*, “Recent Advances and Future Trends in Cutting Tool Materials for Metal Cutting Applications,” Dec. 2025. <https://doi.org/10.18311/jmmf/2025/49338>
  52. Murali Krishna Pasupuleti, “Sustainable Architecture and Green Building: Tools for Eco-Friendly Design,” Aug. 2024. <https://doi.org/10.62311/nesx/rb-978-81-979321-3-7>
  53. Burcu Olgen, “Digital Interactivity in Space: AI-Augmented Eco-Didactic Experience in Public Realm,” Nov. 2025. <https://doi.org/>
  54. Mohib ur Rahman *et al.*, “Artificial Intelligence for Smart Infrastructure System: Integrating Civil and Electrical Engineering,” May 2026. <https://doi.org/10.53762/grjnst.04.03.05>
  55. Sanguk Park *et al.*, “AI-Based Physical and Virtual Platform with 5-Layered Architecture for Sustainable Smart Energy City Development,” Aug. 2019. <https://doi.org/10.3390/su11164479>
  56. Devendra Pratap Singh, “Edge AI-Enabled IoT Architecture for Low-Latency Smart Environment Monitoring,” Apr. 2026. <https://doi.org/10.71143/r4vqyr91>
  57. Abathar M. Al-Yaseri and Laith Kh. Al-Hadithy, “Advances in the structural performance of reinforced concrete flat plate-column connections under gravity and seismic loads,” Jan. 2025. <https://doi.org/10.1007/s41024-025-00568-x>
  58. Samaneh Jalilisadabad and Shiva Bolboli, “Evaluation of Position of Materials Used in the Urban Facades Approach to Sustainable Urban Development (In Persian),” Apr. 2017. <https://doi.org/>

59. Alaa Abdulkhaleq Hussein, "Sustainable Smart Schools: Integrating Green Technology into Educational Infrastructure," Dec. 2025. <https://doi.org/10.13140/RG.2.2.30848.90888>
60. Sen Liu et al., "Underwater-Stable Conductive Hydrogels: From Molecular Design to Next-Generation Aquatic Sensors," Dec. 2025. <https://doi.org/10.1002/cjoc.70331>
61. Singh, "Typography Without A Typographer: Reframing Authorship And Creative Agency In AI-Driven Packaging Design In India," Jan. 2026. <https://doi.org/10.52783/jier.v6i1.4155>
62. Wai Yie Leong, "Sustainable Wearable Health Monitoring Using Energy-Harvesting and Biodegradable Electronics," Mar. 2026. <https://doi.org/10.3390/engproc2026129012>
63. Rehan Ali Khan, Ali Abbas, Noor Saba, Muhammad Irfan Syed, and Adeel Ansari, "AI and IoT integration in Green HRM: A Framework for Eco-Friendly Talent Management and Optimization," Mar. 2026. <https://doi.org/10.63544/ijss.v5i2.255>
64. Khaled Ramzy et al., "Absorber enhancement strategies in solar stills: A comprehensive review on thermodynamic, material, and sustainability perspectives," Dec. 2025. <https://doi.org/10.1016/j.seppur.2025.136358>
65. Nguyen Thanh Tung, "Overview of Recent Research on Novel Materials for Sensor Applications," May 2026. <https://doi.org/10.55677/csr/b/02-V03I05Y2026>
66. Marta Marrón-Romera et al., "IoT Architecture for Automatic Mailboxing Management," Jan. 2026. <https://doi.org/10.2139/ssrn.6172799>
67. Aprajita Singh and Sumit Kumar, "Development of AI-Integrated Smart Fabrics Using Recycled Radiography Sheets: A Sustainable Approach for Wearable Technology," Nov. 2025. <https://doi.org/10.5281/Zenodo.14041173>
68. Nathan Collins et al., "Integrated Climate Monitoring Architecture Using Broadband Plasmonic WSe<sub>2</sub>/MoS<sub>2</sub> Photodetectors with Thermally Stable Al<sub>2</sub>O<sub>3</sub> Reinforced Magnesium Alloys," Feb. 2026. <https://doi.org/>
69. Bojjala Sravya and Muppuru Muni Kesavulu, "Harnessing Plant-Derived Nanoparticles for Sustainable Agriculture: Applications, Challenges, and Prospects," May 2026. <https://doi.org/10.22036/ncr.2025.525590.1481>
70. Chatta Balaji et al., "Toward Secure and Sustainable Smart Cities: An AIoT Architecture Integrating Edge Intelligence, Blockchain, and Green Computing," Feb. 2026. <https://doi.org/10.48175/IJARST-31130>
71. Amrita Baid More et al., "Technological Intelligence and Urban Sustainability: The AI Revolution in India's Smart City Mission," Dec. 2025. <https://doi.org/10.1109/ICIH67754.2025>
72. Nathan Collins et al., "Design of Wear-Resistant Biofiber Epoxy Nanocomposites for Flexible Dual-Band Mid-Infrared Graphene Photodetection Systems," Apr. 2025. <https://doi.org/>
73. Fahim Shakil Rahman, "SMABS (Smart Modular Agro-Bot Swarm) Robots," Oct. 2025. <https://doi.org/>
74. Bambang Saras Yulistiawan et al., "Toward an integrated AI-Driven governance architecture for smart cities and digital economy systems," Mar. 2026. <https://doi.org/10.35335/iacrj.v13i3.665>
75. Murali Krishna Pasupuleti, "Quantum AI for Smart Cities: Optimizing Traffic and Urban Sustainability," Mar. 2025. <https://doi.org/10.62311/nesx/97860>
76. Prof. Dr. Nafiz Kahraman and Alpaslan Atmanli, "The Future of Eco-Friendly Advanced Fuels and Lubricants for Sustainability," Dec. 2025. <https://doi.org/>
77. Archana Suryakant Ghiware, "Green AI Approach for Intelligent Waste Collection and Optimization," Apr. 2026. <https://doi.org/10.55041/ijssmt.v2i4.109>
78. Narashans Alok Sagar and Nitu Rani, "Recent trends and innovations in smart and AI-based food packaging: A review," Jan. 2026. <https://doi.org/10.3389/frfst.2025.1665055>
79. Anna Staszewska and Olena Trokhymets, "Smart tourism as a tool for enhancing competitiveness in the context of sustainable development," Nov. 2025. <https://doi.org/>
80. Saif Mutlaq, "Smart and Green Amra City: An IoT-Driven Urban Framework," May 2026. <https://doi.org/10.13140/RG.2.2.28776.64006>
81. Sedat Sonko, "Conceptual model for embedded AI units in next-generation telecom network optimization," Dec. 2025. <https://doi.org/10.51594/csitrj.v6i11.2133>
82. J. Vignesh, B. Ramesh, and Joseph Raj Xavier, "Recent advances in nano-engineered cement composites for sustainable and smart infrastructure," Oct. 2025. <https://doi.org/10.1007/s41204-025-00476-y>
83. Muhammad Arslan Ahmad et al., "Nano-engineered Self-Healing Concrete: Application, Mechanism, Challenge and Prospect," Sep. 2025. <https://doi.org/10.1016/j.jobe.2025.114179>
84. Onwukwe Chukwuemeka Ozioma Stanislaus et al., "The Nexus of Artificial Intelligence, Biophilic Design and Green Architecture," Apr. 2026. <https://doi.org/10.5281/zenodo.1958222>
85. Mia Luna, "Adopting AI and IoT in Project Management for Smart and Sustainable Architecture," Mar. 2025. <https://doi.org/>
86. Anjali Krushna Kadoo et al., "AI-Assisted 3D-Printed Biomaterial Supercapacitors for Green Energy Storage," May 2025. <https://doi.org/10.52088/ijesty.v5i1.1361>
87. Badrinarayan Rath et al., "Rheological and mechanical performance of sustainable LC3 concrete modified with nano-silica and rubber latex," Jan. 2026. <https://doi.org/10.1038/s41598-025-27234-z>

88. Tunmise Adewale, "Adopting AI and IoT in Project Management for Smart and Sustainable Architecture," Mar. 2025. <https://doi.org/>
89. Dr. Jhuma Saha, Dr. Kumar Bhaskar, and Kirti Oberoi, "Sustainable Culinary Innovation: Integrating Digital Tools for a Greener Kitchen," Dec. 2025. <https://doi.org/10.55041/ISJEM.IMCD041>
90. Sanjay Agal and Ruchika Katariya, "A machine learning enabled IoT framework for intelligent resource management in 6G enabled smart cities," May 2026. <https://doi.org/10.1007/s43926-026-00367-x>
91. Badr Saad Alotaibi et al., "Assimilation of 3D Printing, Artificial Intelligence (AI) and Internet of Things (IoT) for the Construction of Eco-Friendly Intelligent Homes: An Explorative Review," Aug. 2024. <https://doi.org/10.1016/j.heliyon.2024.e36846>
92. Ashok Vaseashta, Sedef Salel, and Nimet Bölgen, "Biopolymer-Based Electrospun Nanofibers for Wound Healing, Regeneration, and Therapeutics," Apr. 2026. <https://doi.org/10.3390/ma19071443>
93. Mumtaz Wasif and Nadeem Sano, "Smart City Development and AI: Revolutionizing Urban Infrastructure Optimization for Efficient Transportation Planning," Jan. 2025. <https://doi.org/10.13140/RG.2.2.26625.77920>
94. Adeola Ajayi and Joseph Adeoluwa, "Integrating Internet of Things (IoT) Technologies and Sustainable Construction Materials for Smart and Resilient Buildings in Nigerian Cities," May 2026. <https://doi.org/10.51583/IJLTEMAS.2026.150400032>
95. Murali Krishna Pasupuleti, "Quantum Neuromorphic and Photonic AI Architectures for Energy-Efficient Cognitive Computing," May 2026. <https://doi.org/10.62311/nesx/rb4m-978-81-687299-6-4>
96. Sagar S. Kawade et al., "Design and Implementation of A Real-time Monitoring Platform to check the performance of E2V," Apr. 2026. <https://doi.org/10.48175/IJAR SCT-32873>
97. Manoj Kumar, Nishith Tripathi, and Jeffrey H. Reed, "A Survey of Smart Grid Emerging Use Cases and Relevant 5G and 6G Capabilities and Features," Jan. 2026. <https://doi.org/10.1109/ACCESS.2026.3667671>
98. Md Muntasir Al Asad Fahim et al., "GreenNet-IoT: An AI-Driven LSTM-ACO-Transformer Framework for Carbon-Aware Energy Optimization in IoT, Cloud, and Data Center Environments," May 2026. <https://doi.org/10.13140/RG.2.2.18056.99846>
99. Md Fazlul Kader et al., "Wireless Body Sensor Network based Next Generation Smart Gown Architecture for Efficient Monitoring of Patient in Hospital," Nov. 2015. <https://doi.org/>
100. Mayuri G. Rupnar et al., "Design and Implementation of A Real-time Monitoring Platform to check the performance of E2V," Apr. 2026. <https://doi.org/10.48175/IJAR SCT-33426>
101. Mir Sohail Ali, Yogesh H. Bhosale, and Neetu Sharma, "Strategic AI-Driven Innovation Management in Nano-Engineered Construction Materials for Sustainable Smart City Infrastructure," Jun. 2025. <https://doi.org/>
102. Daniyal Zafar and Mujadi Musah, "AI-Driven Smart Infrastructure for Sustainable Urban Development and Green Building Innovation," Jul. 2025. <https://doi.org/10.13140/RG.2.2.29754.09929>
103. J. Vignesh, B. Ramesh, and Joseph Raj Xavier, "Recent advances in nano-engineered cement composites for sustainable and smart infrastructure," Oct. 2025. <https://doi.org/10.1007/s41204-025-00476-y>
104. Sitansu Kumar Das, "Smart Materials and Structures for Sustainable Civil Infrastructure: Innovating Eco-Friendly Solutions in Construction and Design," Nov. 2025. <https://doi.org/10.12732/ijam.v38i10s.1126>
105. Muhammad Arslan Ahmad et al., "Nano-engineered Self-Healing Concrete: Application, Mechanism, Challenge and Prospect," Sep. 2025. <https://doi.org/10.1016/j.jobe.2025.114179>
106. Imam Akintomiwa Akinlade et al., "An AI-Driven Framework for Energy-Efficient Environmental Monitoring in Smart Cities Using Edge Intelligence," May 2026. <https://doi.org/>
107. Niyati Naik et al., "AI-Driven Sustainable Infrastructure for Smart City Development," Apr. 2026. <https://doi.org/10.21474/IJAR01/23318>
108. Yichen Liu et al., "An AI-Driven Framework for Energy-Efficient Environmental Monitoring in Smart Cities Using Edge Intelligence," Mar. 2026. <https://doi.org/10.48550/arXiv.2605.22824>
109. Abul Kashem Mohammad Yahia et al., "AI-Driven Sustainable Infrastructure: Smart Materials for Climate-Resilient Urban Design," Feb. 2025. <https://doi.org/10.63125/mc5qpg12>
110. Eman I. Al Shayea, "Artificial intelligence-driven and eco-friendly innovations in orthodontics: a review of smart appliances and sustainable technologies," Apr. 2026. <https://doi.org/10.3389/fmats.2026.1782319>
111. Samuel Gabriel, "Sustainable Smart Cities: Integrating AI-Driven Cloud Automation for Infrastructure and Public Safety," Nov. 2025. <https://doi.org/>
112. Tekram Nishad and Dinesh Kumar Sahu, "Self-Healing Concrete Incorporating Bacterial Spores for Sustainable Infrastructure Development," Mar. 2026. <https://doi.org/10.71086/IAJIR/V13I1/IAJIR1302>
113. Pawel Piotr Majzner et al., "Structural Health Monitoring of Corrosion in Reinforced Concrete: A Key Component for Smart Cities," Nov. 2025. <https://doi.org/10.35808/ersj/4110>
114. Muthmainnah Muthmainnah et al., "AI-Driven Sustainable and Secure Smart Infrastructure

- Systems,” Mar. 2026. <https://doi.org/10.4018/979-8-3373-2140-0>
115. Belghachi Mohammed, “The sentient infrastructure paradigm: a review of novel sensors, digital twins, and AI for civil structural health monitoring,” Jan. 2026. <https://doi.org/10.1108/SR-10-2025-0822>
116. Md. Toriqule Islam *et al.*, “Toward Durable Infrastructure: A Review of Self-Healing Geopolymer Concrete for Sustainable Construction,” Feb. 2026. <https://doi.org/10.3390/app16031571>
117. Aaryan Kapur *et al.*, “Green AI: Energy-Efficient Machine Learning for Sustainable Infrastructure - Middle East Context,” Apr. 2026. <https://doi.org/>
118. Maddi Anirudh *et al.*, “Bacterial Self-Healing Concrete: Mechanisms, Materials, Performance, and Future Perspectives for Sustainable Infrastructure,” May 2026. <https://doi.org/>
119. Manimaran Sellamuthu *et al.*, “Hybrid nano-engineered functionally graded concrete with multi-zone failure analysis for performance zoning and structural health monitoring,” Jan. 2026. <https://doi.org/10.1590/1517-7076-rmat-2025-0841>
120. Krishna Prakash Arunachalam *et al.*, “Eco-Smart Geomaterials and Nano-Engineered Soils: Innovations in Geotechnical Engineering for Pollution Mitigation and Environmental Sustainability,” Apr. 2026. <https://doi.org/10.46488/NEPT.2026.v25i02.D1823>
121. Sujin Jose *et al.*, “Advancements and Applications of Self-Healing Concrete for Sustainable Infrastructure,” Mar. 2026. <https://doi.org/10.1051/epjconf/202635505005>
122. Aarti Karandikar *et al.*, “Hybrid quantum inspired multi-objective optimization framework for self-healing concrete using AI-driven metaheuristics,” Jun. 2025. <https://doi.org/10.1007/s42107-025-01382-z>
123. Touqeer Aslam *et al.*, “Eco-Friendly Roads: Harnessing Vehicle Kinetic Energy for Smart Infrastructure,” Jun. 2025. <https://doi.org/>
124. Rashidul Islam Sifat and Md. Alamin, “AI-Driven Smart Irrigation and Monitoring System for Sustainable Crop Production,” Oct. 2025. <https://doi.org/>
125. Rajesh Adepu, “AI-Enabled Autonomous Infrastructure Monitoring and Self-Healing Cloud Systems,” Jun. 2025. <https://doi.org/>
126. Aurnab Dutta Roy and Ashish Mekanadar, “AI-Optimised Basalt-Graphene Cementitious Composite: Sustainable High-Performance Concrete for Seismic and Blast Resilience with Integrated Structural Monitoring,” Dec. 2025. <https://doi.org/10.5281/zenodo.18230102>
127. Imran Afzal and Khuram Shahzad, “AI-Driven Fintech Innovations: Unlocking Opportunities in Energy Infrastructure and Sustainable Finance,” Feb. 2025. <https://doi.org/>
128. Mohib ur Rahman *et al.*, “Artificial Intelligence for Smart Infrastructure System: Integrating Civil and Electrical Engineering,” May 2026. <https://doi.org/10.53762/grjnst.04.03.05>
129. Blessing Rachael Adeyeye and Samuel Ayofemi Olalekan Adeyeye, “Sustainable smart sensing and AI-driven platforms for real-time detection and monitoring of mycotoxins across the food supply chain,” May 2026. <https://doi.org/10.1007/s12550-026-00653-1>
130. Paweł Karol Frankowski and Sebastian Matysik, “Integrating Electromagnetic NDT and IoT for Enhanced Structural Health Monitoring of Corrosion in Reinforced Concrete as a Key to Sustainable Smart Cities,” Nov. 2025. <https://doi.org/10.3390/su172210307>
131. Amelia M. Hayes, Luna Alexander, and Emily Rose Sophie, “Cyber-Physical Intelligence in Smart Gas Infrastructure: Evaluating AI-Driven Monitoring and Control Technologies,” Apr. 2026. <https://doi.org/>
132. Maria Adelaide Pereira Gomes de Araújo *et al.*, “Durable concrete for infrastructure under Severe Conditions - Smart admixtures, self-responsiveness and nano-additions,” Jan. 2019. <https://doi.org/>
133. Ban Hassan Majeed *et al.*, “Design of a Hybrid AI-Driven Engineering Model for Energy-Efficient and Sustainable Educational Systems,” Mar. 2026. <https://doi.org/10.3991/ijep.v16i1.60437>
134. Mariam Iyabo Adeoba, “Smart Water-Energy Nexus in Concrete Manufacturing: Harnessing Renewable Energy and AI for Sustainable Development,” Jan. 2026. <https://doi.org/10.21741/9781644904053-15>
135. S. M. Kale Kotmale and Sahdev Baburao, “Structural Health Monitoring Using AI-Driven Crack Analysis in Reinforced Concrete,” Dec. 2025. <https://doi.org/10.52783/pst.2868>
136. Venkata M. Kancherla, “Autonomous Cloud Operations: The Role of AI-Driven DevOps in Self-Healing Infrastructure,” Jan. 2023. <https://doi.org/10.63282/3050-922X.IJERET-V4I1P108>
137. Adeola Ona-Olapo Esho *et al.*, “Sustainability-driven electrical engineering optimizing energy efficiency through AI and developing eco-friendly electronics,” Oct. 2024. <https://doi.org/10.58175/gjret.2024.2.2.0031>
138. Grace Tunner, “Performance Evaluation of Self-healing Eco-Friendly Concrete Incorporating Shaped Polymer Aggregates and Nano-silica Using Utility Theory,” May 2025. <https://doi.org/>
139. Km. Pooja and Nazia Tarannum, “Self-healing concrete: a path towards advancement of sustainable infrastructure,” Jul. 2025. <https://doi.org/10.1007/s42452-025-06529-w>
140. Ankit Nainwal, “Innovative Use of Self-Healing Concrete for Sustainable Infrastructure,” Jan. 2021. <https://doi.org/10.17762/msea.v70i1.2529>
141. Mahadeva M. Uday N, “Artificial Intelligence and Smart Technologies for Sustainable Civil

- Engineering,” Oct. 2025. <https://doi.org/10.22161/ijaers.1210.5>
142. Muhammad Sarmad Mahmood et al., “A systematic literature review of AI-based prediction methods for self-compacting, geopolymer, and other eco-friendly concrete types,” Jul. 2024. <https://doi.org/10.1016/j.conbuildmat.2024.137370>
143. Andrea Meoni and Gustavo Nalon, “Special Issue: Advanced Sensing Technologies and Smart Construction Materials for Structural Health Monitoring,” Sep. 2025. <https://doi.org/>
144. Jabir Baloch and Nadia Rahman, “Smart Recovery: Self-Healing Cloud Systems and AI Monitoring in Critical Healthcare Applications,” Jul. 2025. <https://doi.org/10.13140/RG.2.2.33253.72164>
145. Kavyanjali S. et al., “AI-Driven Energy Prediction Models for Sustainable Cloud Infrastructure: A Comprehensive Survey and Unified Framework,” Apr. 2026. <https://doi.org/10.47392/IRJAEM.2026.0138>
146. Md. Eanamul Haque Nizam et al., “Self-Learning Smart Textiles: AI-Driven Adaptive Wearables for Personalized Health Monitoring,” Oct. 2025. <https://doi.org/10.1007/s44174-025-00550-8>
147. V. Parthiban et al., “Smart materials using wireless sensors in structural health monitoring of critical infrastructures,” Apr. 2026. <https://doi.org/10.1007/s10751-026-02450-9>
148. Mohammad Abrartaha Shaik and P. Sneha, “Revolutionizing Infrastructure Resilience: AI-Driven Predictive Maintenance and Structural Health Monitoring,” Jan. 2025. <https://doi.org/10.20944/preprints202501.0480.v1>
149. Manoj Kumar Reddy Kalakoti, “AI-Augmented Self-Healing Infrastructure: Combining Health Probes with Remediation Playbooks,” Sep. 2025. <https://doi.org/10.52783/jisem.v10i58s.12800>
150. Masoud Pedram et al., “A structural health monitoring framework for intelligent and sustainable infrastructure: a conceptual perspective,” May 2026. <https://doi.org/>
151. Nandani Rawat et al., “AI-Driven Real-Time Smart Energy Monitoring, Management and Forecasting System for University Campuses,” May 2026. <https://doi.org/10.55248/gengpi.07.0526.c1307>